

# Heckington Fen Solar Park

EN010123

## Appendix 10.5 – Archaeological Evaluation of Offsite Cable Route Corridor

Applicant: Ecotricity (Heck Fen Solar) Limited

Document Reference: ExA.6.3.10.5-D2.V1

Pursuant to: APFP Regulation 5(2)(a)

Deadline 2: 7th November 2023

Document Revision: 1

November 2023



## APPENDIX 10.5 - ARCHAEOLOGICAL EVALUATION OF OFFSITE CABLE ROUTE CORRIDOR

Document Properties		
Regulation Reference	Regulation 5(2)(q)	
Planning Inspectorate Scheme Reference	EN010123	
Application Document Reference	ExA.6.3.10.5-D2.V1	
Title	Appendix 10.5 - Archaeological Evaluation of Offsite Cable Route Corridor	
Prepared By	Heckington Fen Energy Park Project Team (Pegasus)	
Version History		
Version	Date	Version Status
Rev 1	November 2023	Deadline 2





# Heckington Fen Cable Route Lincolnshire

Archaeological Evaluation (Interim Report on trenches 97-153)



Planning Inspectorate Ref: ENO10123

Accession Number: LCNCC:2022.104

Ref: 267011.03

October 2023



© Wessex Archaeology Ltd 2023, all rights reserved.

Unit R6  
Sheaf Bank Business Park  
Prospect Road  
Sheffield  
S2 3EN

[www.wessexarch.co.uk](http://www.wessexarch.co.uk)

Wessex Archaeology Ltd is a Registered Charity no. 287786 (England & Wales) and SC042630 (Scotland)

#### Disclaimer

The material contained in this report was designed as an integral part of a report to an individual client and was prepared solely for the benefit of that client. The material contained in this report does not necessarily stand on its own and is not intended to nor should it be relied upon by any third party. To the fullest extent permitted by law Wessex Archaeology will not be liable by reason of breach of contract negligence or otherwise for any loss or damage (whether direct indirect or consequential) occasioned to any person acting or omitting to act or refraining from acting in reliance upon the material contained in this report arising from or connected with any error or omission in the material contained in the report. Loss or damage as referred to above shall be deemed to include, but is not limited to, any loss of profits or anticipated profits damage to reputation or goodwill loss of business or anticipated business damages costs expenses incurred or payable to any third party (in all cases whether direct indirect or consequential) or any other direct indirect or consequential loss or damage.

## Document Information

Document title	Heckington Fen Cable Route, Lincolnshire
Document subtitle	Archaeological Evaluation (Interim Report on trenches 97–153 and 241–250)
Document reference	267011.03
Commissioned by	Pegasus Group (Cirencester)
Address	33 Sheep Street Cirencester GL7 1RQ
On behalf of	Ecotricity (Heck Fen) Solar Ltd
Address	Lion House Rowcroft Stroud GL5 3BY
Site location	Brown's Drove, Swineshead Bridge, Swineshead (north of route) to Bicker Drove, Villa Farm (south of route), Boston
County	Lincolnshire
National grid reference (NGR)	521474 343910 (TF 21474 43910) to 519648 339324 (TF 19648 39324)
Planning authority	Lincolnshire County Council, North Kesteven District Council and Boston Borough Council
Planning Inspectorate reference	ENO10123
Museum name	Lincoln Museum
Museum accession code	LCNCC:2022.104
OASIS Id	wessexar1-511893
WA project code	267011
Date of fieldwork	07 August–08 September 2023
Fieldwork directed by	Paula Whittaker
Assisted by	Callum Bruce, Jack Dowling, Philipp Maier, Jonathan Turner, Dan Webster
Project management by	John Winfer
Document compiled by	Patrick Daniel and Emma Metcalfe
Contributions from	Rachael Seager Smith (finds) and Fiona Englesham (environmental)
Graphics by	Carrie May
Document edited by	Clare Jackson-Slater

**Quality Assurance**

Issue	Date	Author	Approved by
1	25/10/2023	EM	[REDACTED]
2	27/10/2023	EM	[REDACTED]



## Contents

Summary .....	iii
Acknowledgements .....	iii
<b>1 INTRODUCTION .....</b>	<b>1</b>
1.1 Project and planning background .....	1
1.2 Scope of the report .....	1
1.3 Location, topography and geology .....	1
<b>2 ARCHAEOLOGICAL AND HISTORICAL BACKGROUND .....</b>	<b>2</b>
2.1 Introduction .....	2
2.2 Previous investigations related to the proposed development .....	2
2.3 Archaeological and historical context .....	3
<b>3 AIMS AND OBJECTIVES .....</b>	<b>4</b>
3.1 General aims .....	4
3.2 General objectives .....	4
3.3 Site-specific objectives .....	4
<b>4 METHODS .....</b>	<b>5</b>
4.1 Introduction .....	5
4.2 Fieldwork methods .....	5
4.3 Finds and environmental strategies .....	6
4.4 Monitoring .....	6
<b>5 STRATIGRAPHIC EVIDENCE .....</b>	<b>6</b>
5.1 Introduction .....	6
5.2 Soil sequence and natural deposits .....	7
5.3 Romano-British .....	7
5.4 Post-medieval–modern .....	7
5.5 Uncertain date .....	8
5.6 Blank trenches .....	9
<b>6 FINDS EVIDENCE .....</b>	<b>9</b>
6.1 Discussion .....	9
<b>7 ENVIRONMENTAL EVIDENCE .....</b>	<b>10</b>
7.1 Description of assemblage .....	10
7.2 Methodology .....	10
7.3 Overview of environmental samples .....	10
<b>8 CONCLUSIONS .....</b>	<b>11</b>
8.1 Summary .....	11
8.2 Discussion .....	11
<b>9 ARCHIVE STORAGE AND CURATION .....</b>	<b>12</b>
9.1 Museum .....	12
9.2 Preparation of the archive .....	12
9.3 Selection strategy .....	12
9.4 Security copy .....	13
9.5 OASIS .....	13
<b>10 COPYRIGHT .....</b>	<b>13</b>
10.1 Archive and report copyright .....	13
10.2 Third party data copyright .....	13



<b>REFERENCES .....</b>	<b>14</b>
<b>APPENDICES .....</b>	<b>16</b>
Appendix 1 Trench summaries.....	16

#### List of Figures

<b>Cover</b>	Ditch 12804/12812 viewed from the south
<b>Figure 1</b>	Site location
<b>Figures 2–5</b>	Trench plan, trenches excavated to date overlaid on geophysical survey
<b>Figure 6</b>	Ditch 12514 viewed from the north-east, 1 m scale.
<b>Figure 7</b>	North facing section of ditch 12706, 1 m scale.
<b>Figure 8</b>	North facing section of ditch 12812, 1 m scale.
<b>Figure 9</b>	Gully 10304 viewed from the south, 0.2 m scale.
<b>Figure 10</b>	East facing section of ditch 12407, showing cut for land drain on southern edge, 1 m scale.
<b>Figure 11</b>	West facing section of ditch 12412, 1 m scale.
<b>Figure 12</b>	South-east facing section of ditch 13003, 1 m scale.

#### List of Tables

<b>Table 1</b>	Finds by material type (number of pieces/weight in grammes)
<b>Table 2</b>	Environmental samples





## Summary

Wessex Archaeology was commissioned by Pegasus Group on behalf of Ecotricity (Heck Fen Solar) Ltd to undertake an archaeological evaluation of a 120 hectare area extending south from Holland Dike on the north side of the A17 at East Heckington to the National Grid Bicker Fen substation. The evaluation will comprise the excavation, investigation and recording of 233 trial trenches. The purpose of this report is to provide an interim summary of the results from the 67 trenches that were excavated in August–September 2023.

Of the 67 trenches that were excavated, 24 contained archaeological remains. The majority of archaeological features were concentrated in the centre of the area evaluated so far, in trenches 121–128, 130, 242, 243–245. Exposed archaeological features correlated well with a possible enclosure system identified in the geophysical survey. Artefactual evidence was recovered from seven trenches and comprised Romano-British pottery, fired clay, animal bone and a fragment of Romano-British rotary quern stone. Six environmental samples have been collected, mostly from ditches.

The trial trench evaluation has established the presence of Romano-British activity, probably an enclosure complex, in this section of the cable route. It has confirmed the positive results of the geophysical survey and tested 'blank areas', exposing a small number of previously undetected features.

## Acknowledgements

Wessex Archaeology would like to thank Pegasus Group and Ecotricity (Heck Fen Solar) Ltd, for commissioning the archaeological evaluation in particular Elizabeth Pratt and Laura White. Wessex Archaeology is also grateful for the advice of the Senior Historic Environment Officer at Heritage Lincolnshire (HL) and the Historic Environment Officers who monitored the project for Lincolnshire County Council (LCC).



# Heckington Fen Cable Route, Lincolnshire

## Archaeological Evaluation (Interim Report on trenches 97–153 and 241–250)

### 1 INTRODUCTION

#### 1.1 Project and planning background

- 1.1.1 Wessex Archaeology was commissioned by Pegasus Group on behalf of Ecotricity (Heck Fen Solar) Ltd, to undertake an archaeological evaluation of a 120 ha strip of land extending south-west from Heckington Fen in Lincolnshire (Fig. 1).
- 1.1.2 This strip of land equates to the route of an underground cable connecting a proposed solar park and energy storage facility at Six Hundreds Farm, Heckington Fen to the National Grid Bicker Fen substation.
- 1.1.3 The client has applied for a development consent order (DCO) for the proposed solar park and cable route development (Planning Inspectorate reference number EN010123). As stated in the Environmental Impact Assessment (Pegasus Group 2022):

*The Development falls within the definition of a 'nationally significant infrastructure project' (NSIP) under Section 14(1)(a) and 15(2) of the Planning Act 2008 (the "Act") as the construction of a generating station with a capacity of more than 50MW, with a capacity in the region of 500MW.*

- 1.1.4 All archaeological evaluation works were undertaken in accordance with a written scheme of investigation (WSI) which detailed the aims, methodologies and standards to be employed in order to undertake the evaluation (Wessex Archaeology 2023a). The Historic Environment Officer at Lincolnshire County Council approved the WSI, on behalf of the Local Planning Authority (LPA), prior to fieldwork commencing.
- 1.1.5 The evaluation, which is due to comprise the excavation of 233 trial trenches (2% sample), commenced following harvest in August 2023 and was paused in September of the same year to avoid affecting newly seeded fields.

#### 1.2 Scope of the report

- 1.2.1 The purpose of this report is to provide an interim summary of the results from the 67 trenches that were excavated in August–September 2023. The excavation of the remainder of the trenches is due to occur in 2024. Following the completion of the evaluation fieldwork, an overall report conforming to the scope of reporting set out in the WSI will be produced.

#### 1.3 Location, topography and geology

- 1.3.1 The evaluated cable route (hereafter 'the route') follows a predominantly south-westward course from Holland Dike on the north side of the A17 at East Heckington (NGR 520932 343931) to the National Grid substation at Bicker Fen 519648 339324. The route is approximately 6 km long.



- 1.3.2 The portion of the cable route that was evaluated in 2023 (the evaluation area) is 1.2 km long and extends to the south-west from Royalty Farm/Swineshead railway station at South Forty Foot Drain to north of Timm's Drive.
- 1.3.3 Ground levels at the evaluation area are around 2 m OD and the central section lies on a roddon (Environmental Archaeology Consultancy 2020).
- 1.3.4 The bedrock geology at the evaluation area, comprises West Walton Formation – Mudstone and Siltstone. The bedrock is overlaid by superficial tidal deposits of clay and silt (British Geological Survey 2023).

## **2 ARCHAEOLOGICAL AND HISTORICAL BACKGROUND**

### **2.1 Introduction**

- 2.1.1 The archaeological and historical context of the proposed solar park and cable route were assessed in a prior heritage desk-based assessment (Pegasus Group 2023). The results were outlined in the WSI (Wessex Archaeology 2023a), and are further summarised below, with an emphasis on records that are of relevance or have a bearing on the cable route and its immediate vicinity. Relevant entry numbers from the Lincolnshire Historic Environment Record (HER) and the National Heritage List for England (NHLE) are included. Additional sources of information are referenced, as appropriate.

### **2.2 Previous investigations related to the proposed development**

#### *Heritage desk-based assessment (2023)*

- 2.2.1 The heritage desk-based assessment (Pegasus Group 2023) collated data from the Lincolnshire Historic Environment Record and Portable Antiquities Scheme, along with historic maps and Historic England's collection of historic aerial photographs, which were sourced for a 2 km radius of the DCO Order limits for the development. NHLE data was reviewed for a 5 km radius of the DCO Order limits.
- 2.2.2 The desk-based assessment concluded that there is potential for buried archaeological remains within both the solar park and the cable route. The likely presence of buried prehistoric and/or Roman remains within both elements of the site was flagged. Of most relevance to the cable route were cropmarks likely relating to such remains. These were noted within its northern and southern sections (i.e., south-west of Royalty Farm and between North Grove and Bicker Grove).

#### *Geophysical survey (2022)*

- 2.2.3 A geophysical survey has been carried out across the cable route (Headland Archaeology 2022). The survey concluded that the area is dominated by geological/natural anomalies associated with the former saltmarsh landscape; it is crossed by several sinuous anomalies indicative of former channels meandering across the landscape.
- 2.2.4 Within the evaluation area (Fields 14, 17 and 18 in the survey report), possible archaeological features were recorded. Numerous interconnecting ditch-type anomalies formed a possible enclosure complex which respects the former watercourses. Cropmarks are also visible in this field on certain historic aerial photographs reviewed as part of the desk-based assessment (Pegasus Group 2023). A number of anomalies also represent former field boundaries.

*Energy Park evaluation (2022)*

- 2.2.5 A total of 962 trial trenches were excavated and recorded at the solar park site at the northern end of the cable route (Wessex Archaeology 2023b). The earliest archaeological evidence was a small assemblage of Mesolithic/Neolithic flints. Romano–British activity was recorded across the central and southern portions of the solar park site and comprised enclosures, possible settlement remains, and evidence of salt processing. Post-medieval remains included plough furrows, infilled field boundaries, a duck decoy and possible hunting coverts.

## **2.3 Archaeological and historical context**

*Prehistoric and Romano-British (to AD 410)*

- 2.3.1 In the Early Holocene, the land would have comprised low-lying saltmarsh crossed by tidal river channels. Marine transgression would have filled the channels with sediment, which through processes of differential erosion or subsidence, became dry ridges of silt, known as roddons. A number of these roddons were settled and used during the prehistoric and Romano-British periods.
- 2.3.2 Neolithic and Bronze Age tools and Romano-British pottery have been discovered around 3 km south-east of the evaluation area, near Swineshead (HER MLI12570, MLI12574, MLI12569, MLI12590), West Low Grounds (HER MLI2573) and Holthills Farm (HER MLI22410). Finds suggest a possible saltern present at Holthills, while a Romano-British saltern has been identified at Helpringham Fen, south-west of the Bicker Fen substation.
- 2.3.3 Cropmarks of probable Iron Age and Romano-British settlement have been recorded around 750 m east of the evaluation area at East Low Grounds (HER MLI90812).
- 2.3.4 In 2021 archaeological mitigation works for the Viking Link Interconnector Scheme identified extensive Romano-British remains to the immediate east of the proposed solar park site, around 2.5 km north of the evaluation area.

*Early medieval and medieval (AD 410–1550)*

- 2.3.5 Garwick, 4.2 km north-west of the northern section of the evaluation area, is believed to be the location of a high-status Anglo-Saxon trading centre with possible early Anglo-Saxon or even Romano-British origins (HER MLI116391). A total of 269 mid-6th to mid-8th-century coins alongside brooches, hooked tags, tweezers, and strap ends were found during metal-detecting and is one of Lincolnshire's largest recorded assemblages of finds from this period.
- 2.3.6 Swineshead is mentioned in the Anglo-Saxon Chronicle in relation to a charter dating from AD 675. There has been some evidence of early medieval activity recorded within the town and Heckington, Steyning (Swineshead) and Bicker were all recorded in the 1086 *Domesday* survey (Open Domesday 2023).

*Post-medieval and modern (1550–present)*

- 2.3.7 The Lincolnshire Fens were subject to large-scale drainage engineering schemes from the 17th century onwards. The construction of the South Forty Foot Drain, to the west of the evaluation area, was undertaken from 1635 to 1638.
- 2.3.8 The settlement of East Heckington, along the A17, was in existence by the 18th century (HER MLI87648). Buildings recorded here by the HER include the 19th-century or earlier farmsteads of Poplars Farm (MLI121995), Elm Grange (MLI121956), Home Farm (MLI121955), Rectory Farm (MLI121954), and Rakes Farm (MLI121953); two 19th-century



places of worship (MLI87649, MLI97290); an early 20th-century or earlier smithy (MLI88102), and the early 20th-century house and designed landscape of Park House (MLI87654).

2.3.9 Historic maps show the land along which the evaluation area extends as drained by the late 18th century. The First Edition OS map showed the evaluation area comprising sub-rectangular fields. Small buildings and farmhouses are also present, dotted around the landscape.

### **3 AIMS AND OBJECTIVES**

#### **3.1 General aims**

3.1.1 The general aims of the evaluation, as stated in the WSI (Wessex Archaeology 2023a) and in compliance with the ClfA *Standard and guidance for archaeological field evaluation* (ClfA 2014a), were to:

- provide information about the archaeological potential of the site; and
- inform either the scope and nature of any further archaeological work that may be required; or the formation of a mitigation strategy (to offset the impact of the development on the archaeological resource); or a management strategy.

#### **3.2 General objectives**

3.2.1 In order to achieve the above aims, the general objectives of the evaluation were to:

- determine the presence or absence of archaeological features, deposits, structures, artefacts or ecofacts within the specified area;
- establish, within the constraints of the evaluation, the extent, character, date, condition and quality of any surviving archaeological remains;
- place any identified archaeological remains within a wider historical and archaeological context in order to assess their significance;
- make available information about the archaeological resource within the site by reporting on the results of the evaluation; and
- to produce a site archive for deposition with Lincoln Museum and to provide information for accession to the museum.

#### **3.3 Site-specific objectives**

3.3.1 Following consideration of the archaeological potential of the site and the regional research framework (Research Frameworks 2023), the site-specific objectives defined in the WSI (Wessex Archaeology 2023a) were to:

- test the results of the geophysical survey;
- test the 'blank areas' for any previously undetected archaeological remains;
- determine the presence or absence of early prehistoric remains covered by alluvial deposits or by peat;

- determine the depth of the alluvial sequence and examine the archaeological and palaeoenvironmental potential of alluvial deposits;
- examine evidence for remains of medieval/post-medieval agricultural remains and assess if this has impacted on any earlier remains;
- examine the evidence of water management and land drainage change in the post-medieval and modern (1750+) period;
- examine the artefactual and ecofactual potential of archaeological deposits, some of which may be waterlogged; and
- assess the potential for the recovery of artefacts to assist in the development of type series within their local, regional and national context.

## **4 METHODS**

### **4.1 Introduction**

4.1.1 All works were undertaken in accordance with the detailed methods set out within the WSI (Wessex Archaeology 2023a) and in general compliance with the standards outlined in ClfA guidance (ClfA 2014a). The methods employed are summarised below.

### **4.2 Fieldwork methods**

#### *General*

- 4.2.1 The trench locations were set out using a Global Navigation Satellite System (GNSS) connected to Leica's SmartNet service, in the approximate positions proposed in the WSI, although trenches 97–101 and 103 had to be slightly moved because of obstacles such as hedgerows and located services (Fig. 1). Trenches were positioned to target geophysical anomalies identified as possible archaeology or geological features such as roddon tributaries, or to test 'blank' areas.
- 4.2.2 During the 2023 evaluation, 67 trial trenches were excavated. Of these, 57 (trenches 97–153) measured 50 m in length and 2 m wide, and an additional 10 contingency trenches (241–250), excavated to further investigate geophysical anomalies and features found in the original trenches, measured 25 m long and 2 m wide. The trenches were excavated in level spits using a 360° excavator equipped with a toothless bucket, under the constant supervision and instruction of the monitoring archaeologist. Machine excavation proceeded until either the archaeological horizon or the natural geology was exposed.
- 4.2.3 Where necessary, the base of the trench/surface of archaeological deposits were cleaned by hand. A sample of archaeological features and deposits was hand-excavated, sufficient to address the aims of the evaluation.
- 4.2.4 Spoil from machine stripping and hand-excavated archaeological deposits was visually scanned for the purposes of finds retrieval. Artefacts were collected and bagged by context. All artefacts from excavated contexts were retained.
- 4.2.5 Trenches completed to the satisfaction of the client, the Senior Historic Environment Officer at Heritage Lincolnshire and the Historic Environment Officer for Lincolnshire County Council, were backfilled using excavated materials in the order in which they were excavated, and left level on completion. No other reinstatement or surface treatment was undertaken.





### *Recording*

- 4.2.6 All exposed archaeological deposits and features were recorded using Wessex Archaeology's pro forma recording system. A complete record of excavated features and deposits was made, including plans and sections drawn to appropriate scales (generally 1:20 or 1:50 for plans and 1:10 for sections) and tied to the Ordnance Survey (OS) National Grid.
- 4.2.7 The Leica GNSS surveyed the location of archaeological features. All survey data is recorded in OS National Grid coordinates and heights above OD (Newlyn), as defined by OSTN15 and OSGM15, with a three-dimensional accuracy of at least 50 mm.
- 4.2.8 A full photographic record was made using digital cameras equipped with an image sensor of not less than 16 megapixels. Digital images have been subject to managed quality control and curation processes, which has embedded appropriate metadata within the image and will ensure long term accessibility of the image set.

## **4.3 Finds and environmental strategies**

- 4.3.1 Strategies for the recovery, processing and assessment of finds and environmental samples were in line with those detailed in the WSI (Wessex Archaeology 2023a). The treatment of artefacts and environmental remains was in general accordance with: *Standard and guidance for the collection, documentation, conservation and research of archaeological materials* (ClfA 2014b), *Environmental Archaeology. A Guide to the Theory and Practice of Methods, from Sampling and Recovery to Post-excavation* (English Heritage 2011), and ClfA's *Toolkit for Specialist Reporting* (2022; Type 2: Appraisal).

## **4.4 Monitoring**

- 4.4.1 The Senior Historic Environment Officer at Heritage Lincolnshire and the Historic Environment Officer for Lincolnshire County Council monitored the evaluation on behalf of the LPA. Any variations to the WSI, if required to better address the project aims, were agreed in advance with the client and the Historic Environment Officer.

# **5 STRATIGRAPHIC EVIDENCE**

## **5.1 Introduction**

- 5.1.1 A total of 24 of the 67 (36%) excavated trial trenches contained archaeological features and deposits, indicating archaeological remains are present in the central portion of the evaluation area (Fig. 3).
- 5.1.2 The uncovered features, comprising ditches and gullies, appear to represent the remains of a Romano-British enclosure or field system. Several other ditches were found, by their stratigraphic position (cutting the subsoil) and/or the presence of modern material such as barbed wire and polythene in their fills, to be of post-medieval or modern date. A number of features remain of uncertain date.
- 5.1.3 The following section presents the results of the evaluation with archaeological features and deposits discussed by period.
- 5.1.4 Detailed descriptions of individual contexts are provided in the trench summary tables (Appendix 1). Figures 2–5 show all archaeological features recorded within the trenches, together with the preceding geophysical survey results (Headland 2022).

## 5.2 Soil sequence and natural deposits

- 5.2.1 The natural geological substrate was reached at levels of around 0.3 m below ground level and comprised reddish or grey silty clay and yellowish mottled silty sand, frequently seen as bands or patches.
- 5.2.2 A thin layer of subsoil was recorded in 20 trenches, all of which were located in the north of the evaluated area. It comprised greyish brown silty clay or sandy silty and was between 0.05 m and 0.16 m thick. Alluvium was recorded in seven of these northernmost trenches. It was between 0.2 m and 0.8 m thick and comprised orange or greyish brown sandy or silty clay. It lay directly over the natural substrate.
- 5.2.3 Topsoil was present across the evaluated area and consisted of a greyish brown sandy silt or silty clay.

## 5.3 Romano-British

- 5.3.1 Three trenches, 125, 127 and 128 (Fig. 3), contained features which produced artefactual evidence of Romano-British date. These trenches were located in the approximate centre of the evaluation area, where a series of geophysical anomalies were recorded and interpreted as a possible Romano-British enclosure system.
- 5.3.2 Trench 125 exposed three ditches, all of which produced pottery of Romano-British date as well as animal bone. Ditch 12514 (1.56 m wide x 0.5 m deep; Fig. 6), approximately correlates with a geophysical anomaly that seems to be a subdivision of a larger enclosure however, it is on a slightly different north-east to south-west alignment. The easternmost ditch, 12503 (1.56 m wide x 0.5 m deep), corresponds with the eastern side of an enclosure, while ditch 12510 (1.37 m wide x 0.62 m deep) was adjacent to a former watercourse or palaeochannel.
- 5.3.3 Ditches 12706 (2.63 m wide x 0.62 m deep; Fig. 7) and 12713 (2.08 m wide x 0.74 m deep) correspond with geophysical anomalies that appear to form two sides of a roughly triangular enclosure (Fig. 3). Ditch 12703/12711 (1.65 m wide x 0.44 m deep/1.6 m wide x 0.44 m deep) corresponds with a north-west to south-east aligned linear anomaly that continues into trench 128 (12804; 2.00 m wide x 0.35 m deep), though its turn to the north (12812; 1.43 m wide x 0.39 m deep) was not recorded in the survey. Bulk sediment samples were taken from ditches 12711 and 12713 and finds of animal bone and Romano-British pottery were recovered from ditches 12703 and 12713.
- 5.3.4 Ditch 12804/12812 (Cover, Figs 4 and 8) was the corner of a rectilinear feature. Roman pottery, fired clay and animal bone were found in both sections of ditch and a fragment of a rotary quern stone, also of Romano-British date, was recovered from ditch 12812.

## 5.4 Post-medieval–modern

- 5.4.1 In trench 126 (Fig. 3) east–west ditch 12603 (0.96 m wide x 0.72 m deep) was cut or recut by ditch 12605 (1.82 m wide x 0.72 m deep) on the same alignment. The earlier ditch contained three sherds of post-medieval/modern pottery along with animal bone, whilst the later ditch was disturbed by a land drain, also aligned east–west. The ditches were located around 10 m north of an east–west aligned former field boundary.
- 5.4.2 North–south aligned gully 10304 (0.55 m wide x 0.18 m deep; Figs 2 and 9), and pit 11704 (unexcavated due to modern material present; Figs 2 and 3) cut through the subsoil, dating them to the post-medieval to modern periods.

5.4.3 Ditches in trenches 141 (14103; 1.37 m wide x 0.72 m deep) and 152 (15203; 1.43 m wide x 0.77 m deep) both contained polythene in the base of their fills. The ditches were on the same north-east to south-west alignment as current field boundaries (Fig. 5) and may represent an earlier post-medieval field division.

## 5.5 Uncertain date

5.5.1 Several trenches contained features which corresponded with geophysical anomalies thought to represent a Romano-British enclosure system but did not contain dating evidence. These features are probably broadly contemporary with the datable features in trenches 125, 126, 127 and 128.

5.5.2 North-east to south-west aligned ditches 12103 (1.64 m wide x 0.46 m deep), 12205 (1.9 m wide x 0.39 m deep) and 12305 (1.62 m wide x 0.45 m deep; Fig. 3) correspond with a potential enclosure boundary. Ditch slot 24203 (Fig. 3) is probably part of the same enclosure, although there is a gap in the geophysical data between the two sections. The ditch is cut by a land drain (24206; not on plan) on the same alignment. This may represent an entryway or may be caused by disturbance in the geophysical survey. The southern boundary of the same enclosure was investigated in ditch slot 12403 (1.68 m wide x 0.48 m deep; Fig. 3). A bulk sediment sample was collected from 12103.

5.5.3 Ditches 12407 (2.14 m wide x 0.79 m deep; Figs 3 and 10) and 12412 (1.31 m wide x 0.44 m deep; Figs 3 and 11) correspond with two further linear anomalies to the south on the same north-west to south-east alignment.

5.5.4 Gully 12203 (0.38 m wide x 0.08 m deep) and gully terminal 12303 (0.73m wide x 0.26 m deep; Fig.3) did not correspond with any geophysical anomalies, however they were both on a similar north-east to south-west orientation and may represent another division within the same enclosure system. A piece of fired clay, possibly part of a spindle whorl, recovered from 12303 is currently undated. In trench 130 (Figs 3 and 4) a north-west to south-east aligned ditch, 13003 (1.68 m wide x 0.63 m deep; Fig. 12), corresponds with a linear anomaly interpreted in the geophysical survey as geology. It did not contain any artefactual evidence.

5.5.5 A gully in trench 128, 12808 (1.05 m wide x 0.17 m deep; Fig. 3), did not align with any geophysical anomalies nor contain any dating evidence. It was shallow and fairly irregular and was possibly a natural feature. Features investigated in trenches 243 and 244, 24303 (3.7 m wide x 0.34 m deep) and 24403 (3.65 m wide x 0.33 m deep; Fig. 3) may also be natural features. They correspond with geophysical anomalies interpreted as geology. A bulk sediment sample was taken from 24303.

5.5.6 A wide feature in trench 245, 24503 (>5.26 m wide x 0.93 m deep; Fig. 3) was recorded as a possible ditch, although only one edge was exposed within the trench. The feature was filled with several sandy clay deposits, which contained animal bone and ceramic building material (CBM).

5.5.7 Two north-west to south-east ditches, 24803 (2.3 m wide x 1.10 m deep) and 24805, (1.7x 0.18 m deep; Fig. 3) were recorded in trench 248. Neither contained any artefactual evidence.

5.5.8 Ditches aligned east-west were investigated in trenches 135 (13503; 1.77 m wide x 0.98 m deep), 138 (13803; 1.4 m wide x 0.38 m deep) and 139 (13903; 1.6 m wide x 0.61 m deep). Ditches 13803 and 13903 appear to be the same feature. Trench 137 contained a north-

west to south-east aligned ditch (13703; 1.65 m wide x 0.38 m deep). None of these features corresponded with geophysical anomalies (Fig. 4) or produced any finds.

- 5.5.9 At the northern end of the evaluation area, a gully terminal and a ditch, 10203 (1.00 x 0.6 m deep) and 11005 (2.3 x 0.71 m deep; Fig. 2), were investigated. Animal bone was recovered from ditch 11005, which correlated with a possible drain identified in the geophysical survey and was cut into a possible palaeochannel (11003/11004). Bulk sediment samples were collected from both features.

## 5.6 Blank trenches

- 5.6.1 Trenches 97–101, 104–109, 111–116, 118–120, 131–134, 136, 140, 142, 143–151, 153, 241, 246, 247, 249, 250 were blank, with only generalised deposits recorded. Trenches were more commonly proved to be blank towards the northern and southern ends of the evaluation area.

## 6 FINDS EVIDENCE

### 6.1 Discussion

- 6.1.1 Approximately 10.4 kg of finds were recovered during the hand excavation of features and deposits in nine of the trenches (110, 123, 125-128, 131, 147 and 245). All the finds have been washed, air dried, bagged and boxed by material type within each context.
- 6.1.2 The finds have also been quantified (number of pieces and weight in grammes) by material type within each context and rapidly scanned to assess their nature, condition and broad chronological range. This information is summarised in Table 2. All material survive in good, fresh condition and are comparable with material recovered in the wider development area (e.g., Wessex Archaeology 2023b, Section 6, 28–40).

**Table 1** Finds by material type (number of pieces/weight in grammes)

Material	No.	Wt (g)	Comments
Animal bone	295	3660	Mostly from the larger, robust elements of the major domesticated species, predominantly cattle. Fragmented, but refitting pieces noted. Found with Romano-British pottery in ditches 12503, 12510, 12703, 12804 and 12812, with post-medieval/modern finds in ditches 12603 and 24503 and without associated finds in ditch 11005.
Ceramic building material	2	25	Post-medieval/modern ceramic land drain fragments; topsoil of trench 147 and ditch 24503.
Fired clay	21	165	1 piece (11 g) from a small disc with a lenticular cross-section in a fine, silty fabric with oxidised surface and an unoxidised core; possibly part of a spindle whorl, counter or weight; ditch 12303. Other pieces (ditches 12804 and 12812) are all featureless fragments probably of structural origin.
Pottery	199	5504	Large, well-preserved sherds. With the exception of three sherds from an internally glazed Redware bowl of post-



			medieval/modern date (ditch 12603), all the sherds belong within the Romano-British period (ditches 12503, 12510, 12514, 12703, 12713, 12804 and 12812 as well as the topsoil of trench 131). Most Romano-British sherds are from utilitarian coarseware vessels (storage jars, jars, jars/bowls) in local greyware and shell-tempered fabrics, with numerous refitting pieces noted. One piece of Central Gaulish samian (ditch 12713), three sherds from Nene Valley colour-coated ware vessels with barbotine decoration (ditches 12804 and 12813) and three from a small, whiteware flagon (ditch 12813) provide evidence for wider trading contacts.
Stone	1	1094	Rotary quern fragment (Romano-British); found in ditch 12812.
<b>Total</b>	<b>518</b>	<b>10448</b>	

## 7 ENVIRONMENTAL EVIDENCE

### 7.1 Description of assemblage

7.1.1 Six samples, totalling 24 buckets (240 litres), were taken from ditches, a ditch terminus, and an indeterminate feature type. All sampling was undertaken following Wessex Archaeology's in-house guidance, which adheres to the principles outlined in Historic England's guidance (English Heritage 2011 and Historic England 2015).

### 7.2 Methodology

7.2.1 The bulk samples will be processed through wet sieving and standard flotation methods using a Siraf-type flotation tank; the flots retained on a 0.25 mm mesh and residues fractionated into 4 mm and 1 mm fractions. The residues will be sorted for artefactual and environmental remains.

7.2.2 The flots will be examined using a low-power stereomicroscope at up to x40 magnification. Plant remains will be identified through comparison with modern reference material held by Wessex Archaeology and relevant literature (Cappers et al. 2006). Selected charcoal fragments may be identified through examination of the transverse, tangential longitudinal, and radial longitudinal sections at up to x400 magnification.

7.2.3 The environmental remains will be recorded semi-quantitatively using an abundance scale. Suitability of material for radiocarbon dating will be determined after assessment of the archaeobotanical assemblage.

### 7.3 Overview of environmental samples

7.3.1 A catalogue of environmental soil samples is presented in Table 3.

**Table 2** Environmental samples

Sample Number	Area	Context Number	Feature Number	Feature	Sample Type
10201	8	10204	10203	Ditch terminus	Bulk



11001	8	11006	11005	Ditch	Bulk
12101	9	12105	12103	Ditch	Bulk
12701	9	12714	12713	Ditch	Bulk
12702	9	12712	12711	Ditch	Bulk
24301	9	24305	24303	Uncategorised feature	Bulk

## 8 CONCLUSIONS

### 8.1 Summary

- 8.1.1 The archaeological evaluation identified an area of Romano-British activity towards the northern extent of the cable route, consisting of ditches and gullies. The excavated features generally correspond well with the results of the geophysical survey (Headland 2022) and potentially form part of a Romano-British enclosure system.
- 8.1.2 Several features investigated outside this area of archaeological activity are post-medieval/modern and probably relate to agricultural activity. A number of ditches remain uncertain in date.
- 8.1.3 The majority of the datable finds date to the Romano-British period, with a small amount of post-medieval/modern material.
- 8.1.4 Alluvial deposits and a possible palaeochannel were recorded at the northern end of this section of the route.

### 8.2 Discussion

- 8.2.1 This section of cable route has good archaeological potential. The geophysical survey and trial trench data indicate there are elements of an agricultural enclosure or field system from which the local coastal fringe was exploited during the Romano-British period. The enclosures appear to respect the former watercourses identified in the geophysical survey suggesting they may be contemporary (Headland 2022).
- 8.2.2 Although relatively few such sites were known in the vicinity until fairly recently (Smith 2016, fig. 5.3 and 5.4), results from the Triton Knoll and Viking Link cable routes in particular have revealed a fairly extensive spread of settlement and boundary-marking around Bicker Fen, and the lower reaches of the Witham Valley generally, following the Roman Conquest (Headland Archaeology forthcoming a and b; Wessex Archaeology 2023b). Such activity, perhaps driven by the material demands and opportunities presented to native farmers by Roman rule, and enabled by falling sea levels during the period (Waller 1994, 81), is thought to form the context of the remains recorded within the evaluated area.
- 8.2.3 While it is only a small sample of the total area that will be investigated, the evaluation completed to date has successfully met a number of its general aims and objectives and site-specific objectives. It has established the presence of archaeological features of Romano-British date forming part of an agricultural enclosure system in the centre of this group of trenches. It has confirmed the positive results of the geophysical survey and tested 'blank areas', revealing a small number of previously undetected features. The artefactual assemblage will be assessed in further detail for its potential to contribute to the development of type series within its local, regional and national context.





8.2.4 Following the completion of the evaluation fieldwork, an overall report conforming to the scope of reporting set out in the WSI will be produced.

## **9 ARCHIVE STORAGE AND CURATION**

### **9.1 Museum**

9.1.1 The archive resulting from the evaluation is currently held at the offices of Wessex Archaeology in Sheffield. Lincoln Museum has agreed in principle to accept the archive on completion of the project, under the accession code LCNCC:2022.104. Deposition of any finds with the museum will only be carried out with the full written agreement of the landowner to transfer title of all finds to the museum.

### **9.2 Preparation of the archive**

#### *Physical archive*

9.2.1 The archive, which includes paper records, graphics, artefacts and ecofacts, will be prepared following the standard conditions for the acceptance of excavated archaeological material by Lincoln Museum, and in general following nationally recommended guidelines (Brown 2011; ClfA 2014c; SMA 1995).

9.2.2 All archive elements are marked with LCNCC:2022.104, and a full index will be prepared. The physical archive currently comprises the following:

- 1 cardboard boxes or airtight plastic boxes of artefacts and ecofacts, ordered by material type
- 1 files/document cases of paper records

#### *Digital archive*

9.2.3 The digital archive generated by the project, which comprises born-digital data (e.g., site records, survey data, databases and spreadsheets, photographs and reports), will be deposited with a Trusted Digital Repository, in this instance the Archaeology Data Service (ADS), to ensure its long-term curation. Digital data will be prepared following ADS guidelines (ADS 2013 and online guidance) and accompanied by metadata.

9.2.4 Full details of the collection, processing and documentation of digital data will be given in the project data management plan within the full report, once all trenches have been completed

### **9.3 Selection strategy**

9.3.1 It is widely accepted that not all the records and materials (artefacts and ecofacts) collected or created during the course of an archaeological project require preservation in perpetuity. These records and materials will be subject to selection in order to establish what will be retained for long-term curation, with the aim of ensuring that all elements selected to be retained are appropriate to establish the significance of the project and support future research, outreach, engagement, display and learning activities, i.e., the retained archive should fulfil the requirements of both future researchers and the receiving Museum.

9.3.2 The selection strategy, which details the project-specific selection process, is underpinned by national guidelines on selection and retention (Brown 2011, section 4) and generic selection policies (SMA 1993; Wessex Archaeology's internal selection policy) and follows ClfA's *Toolkit for Selecting Archaeological Archives*. It should be agreed by all stakeholders



(Wessex Archaeology's internal specialists, external specialists, local authority, museum) and fully documented in the project archive.

- 9.3.3 Detailed selection proposals for the project archive, comprising finds, environmental material and site records (analogue and digital) will be made once all trenches have been completed.

## **9.4 Security copy**

- 9.4.1 In line with current best practice (e.g., Brown 2011), on completion of the project a security copy of the written records will be prepared, in the form of a digital PDF/A file. PDF/A is an ISO-standardised version of the Portable Document Format (PDF) designed for the digital preservation of electronic documents through omission of features ill-suited to long-term archiving.

## **9.5 OASIS**

- 9.5.1 An OASIS (online access to the index of archaeological investigations) record (<http://oasis.ac.uk>) has been initiated, with key fields completed (wessexar1-511893 ). A .pdf version of the final report will be submitted following approval by the Historic Environment Officer at Lincolnshire County Council on behalf of the LPA. Subject to any contractual requirements on confidentiality, copies of the OASIS record will be integrated into the relevant local and national records and published through the Archaeology Data Service (ADS) ArchSearch catalogue.

## **10 COPYRIGHT**

### **10.1 Archive and report copyright**

- 10.1.1 The full copyright of the written/illustrative/digital archive relating to the project will be retained by Wessex Archaeology under the *Copyright, Designs and Patents Act 1988* with all rights reserved. The client will be licenced to use each report for the purposes that it was produced in relation to the project as described in the specification. The museum, however, will be granted an exclusive licence for the use of the archive for educational purposes, including academic research, providing that such use conforms to the *Copyright and Related Rights Regulations 2003*.
- 10.1.2 Information relating to the project will be deposited with the Historic Environment Record (HER), where it can be freely copied without reference to Wessex Archaeology for the purposes of archaeological research or development control within the planning process.

### **10.2 Third party data copyright**

- 10.2.1 This document and the project archive may contain material that is non-Wessex Archaeology copyright (e.g., Ordnance Survey, British Geological Survey, Crown Copyright), or the intellectual property of third parties, which Wessex Archaeology are able to provide for limited reproduction under the terms of our own copyright licences, but for which copyright itself is non-transferable by Wessex Archaeology. Users remain bound by the conditions of the *Copyright, Designs and Patents Act 1988* with regard to multiple copying and electronic dissemination of such material.



## REFERENCES

- ADS 2013. *Caring for Digital Data in Archaeology: a guide to good practice*. Archaeology Data Service and Digital Antiquity Guides to Good Practice.
- British Geological Survey 2023. *BGS Geology Viewer* <https://www.bgs.ac.uk/map-viewers/bgs-geology-viewer/> (accessed October 2023).
- Brown, D. H. 2011. *Archaeological Archives: a guide to best practice in creation, compilation, transfer and curation* (revised edition). Archaeological Archives Forum.
- Cappers, R. T. J., Bekker, R. M. and Jans, J. E. A. 2006. *Digital Seed Atlas of the Netherlands*. Groningen: Barkhuis Publishing.
- Chartered Institute for Archaeologists [ClfA] 2014a. *Standard and Guidance for Archaeological Field Evaluation* (revised edition October 2020). Reading: Chartered Institute for Archaeologists.
- ClfA 2014b. *Standard and Guidance for the Collection, Documentation, Conservation and Research of Archaeological Materials* (revised edition October 2020). Reading: Chartered Institute for Archaeologists.
- ClfA 2014c. *Standard and Guidance for the Creation, Compilation, Transfer and Deposition of Archaeological Archives* (revised edition October 2020). Reading: Chartered Institute for Archaeologists.
- ClfA 2022a. *Toolkit for Specialist Reporting* <https://www.archaeologists.net/reporting-toolkit> (accessed December 2022).
- ClfA 2022b. *Toolkit for Selecting Archaeological Archives* <https://www.archaeologists.net/selection-toolkit> (accessed December 2022).
- English Heritage 2011. *Environmental Archaeology. A Guide to the Theory and Practice of Methods, from Sampling and Recovery to Post-excavation* (2nd edition). Portsmouth: English Heritage.
- Environmental Archaeology Consultancy 2020. *Proposed Viking Link – National Grid UK Onshore Scheme, evaluation of potential for buried archaeological deposits and palaeoenvironmental deposits along the proposed route from landfall at Well High Lane, Boygrift, East Lindsay to Bicker Fen, North Kesteven*. Unpublished rep.
- Headland Archaeology 2022. *Heckington Fen Solar Park, Cable Corridors, Lincolnshire. Geophysical Survey Report*.
- Headland Archaeology Forthcoming a. *Archaeological Investigations Along the Triton Knoll Offshore Wind Farm Cable Route*.
- Headland Archaeology Forthcoming b. *Archaeological Investigations on the Site of the Viking Link Converter Station*.
- Pegasus Group 2022. *Environmental Impact Assessment Scoping Report*.
- Pegasus Group 2023. *Heritage Desk-Based Assessment: Heckington Fen Solar Park*.



Smith, A. 2016. 'The Central Belt', in Smith, A., Allen, M., Brindle T. and Fulford, M., *New Visions of the Countryside of Roman Britain Volume 1: The Rural Settlement of Roman Britain*, 141–207. London: Society for the Promotion of Roman Studies.

Research Frameworks 2023. *East Midlands Historic Environment Research Framework*. <https://researchframeworks.org/emherf/> (accessed August 2023).

SMA 1993. *Selection, Retention and Dispersal of Archaeological Collections*. London: Society of Museum Archaeologists.

SMA 1995. *Towards an Accessible Archaeological Archive*. London: Society of Museum Archaeologists.

Waller, M. 1994. *The Fenland Project, Number 9: Flandrian Environmental Change in Fenland*. East Anglian Archaeology 70.

Wessex Archaeology 2023a. *Heckington Fen Cable Route, Lincolnshire: Outline Written Scheme of Investigation – Evaluation*. Unpubl rep 267011.01.

Wessex Archaeology 2023b. *Heckington Fen Energy Park, Lincolnshire. Archaeological Evaluation*. Unpubl rep 267010.02.

Wessex Archaeology 2023c. *Viking Link, Lincolnshire, Zones 2 and 3. Post-excavation Assessment Volume 1: Main Text and Figures*. Unpubl rep 218714.01.



## APPENDICES

### Appendix 1 Trench summaries

Trench No 97		Length 50 m	Width 2 m	Depth 0.55 m
Context Number	Fill Of/Filled With	Interpretative Category	Description	Depth BGL
9701		Topsoil	Mid grey brown clayey silt, rare 1-3% fine $\leq$ 5mm rooting from previous crop, moderate compaction, boundary below clear	0.0–0.45
9702		Natural	Mid yellow brown silty sand, devoid of inclusions, moderately firm compaction	0.45+

Trench No 98		Length 50 m	Width 2 m	Depth 0.47 m
Context Number	Fill Of/Filled With	Interpretative Category	Description	Depth BGL
9801		Topsoil	Mid grey brown clayey silt, rare 1-3% fine $\leq$ 5mm rooting from previous crop, moderate compaction, boundary below diffuse with plough scars	0.0–0.33
9802		Subsoil	Mid brown grey sandy silt, rare 1-2% very fine $\leq$ 5mm Mn flecks subrounded poorly sorted, moderate compaction, boundary below clear	0.33–0.39
9803		Natural	Light brown yellow silty sand, devoid of inclusions, moderate compaction	0.39+

Trench No 99		Length 50 m	Width 2 m	Depth 0.40 m
Context Number	Fill Of/Filled With	Interpretative Category	Description	Depth BGL
9901		Topsoil	Mid grey brown clayey silt, rare 1-3% fine $\leq$ 5mm rooting from previous crop, soft compaction, boundary below clear	0.0–0.26
9902		Subsoil	Mid brown grey sandy silt, rare 1-2% Mn flecks very fine $\leq$ 5mm subrounded poorly sorted, moderately soft compaction, boundary below clear	0.26–0.34
9903		Natural	Light brown yellow silty sand, devoid of inclusions, moderate compaction	0.34+



Trench No 100		Length 50 m	Width 2 m	Depth 55 m
Context Number	Fill Of/Filled With	Interpretative Category	Description	Depth BGL
10001		Topsoil	Mid brown sandy silt no inclusions.	0.0–0.35
10002		Natural	Pale beige yellowish orange sand, pale grey white marley patches. Mid bluey grey clay patches within it.	0.35–0.55+
10003		Subsoil	Alluvium. Dark orange brown sandy clay.	0.35–0.55+

Trench No 101		Length 50 m	Width 2 m	Depth 0.52 m
Context Number	Fill Of/Filled With	Interpretative Category	Description	Depth BGL
10101		Topsoil	Mid grey brown clayey silt, rare 1-3% fine ≤5mm rooting from previous crop, moderate compaction, boundary below clear	0.0–0.38
10102		Natural	Mid yellow brown silty sand, devoid of inclusions, moderate compaction	0.38+

Trench No 102		Length 50 m	Width 2 m	Depth 0.52 m
Context Number	Fill Of/Filled With	Interpretative Category	Description	Depth BGL
10201		Topsoil	Mid grey brown clayey silt, rare 1-3% fine ≤5mm rooting from previous crop, moderate compaction, boundary below clear	0.0–0.38
10202		Natural	Light brown yellow silty sand, devoid of inclusions, moderate compaction	0.38+
10203	10204, 10205	Gully terminal	Linear gully terminal aligned NW-SE with steep, concave sides and a concave base. Length: >1.00 m. Width: 0.60 m. Depth: 0.37 m.	0.38–0.78
10204	10203	Secondary fill	Brownish grey with dark orange mottling silty clay	0.38–0.78
10205	10203	Tertiary fill	Mid blackish brown silty clay	0.38–0.54

Trench No 103		Length 50 m	Width 2 m	Depth 0.55 m
Context Number	Fill Of/Filled With	Interpretative Category	Description	Depth BGL
10301		Topsoil	Mid grey brown clayey silt, rare 1-3% fine ≤5mm rooting from previous crop, soft compaction, boundary below clear	0.0–0.27
10302		Subsoil	Mid grey red silty clay, rare 1-2% Mn flecks very fine ≤5mm subrounded poorly sorted, moderately soft compaction	0.27–0.48





10303		Natural	Light brown yellow silty sand, devoid of inclusions, moderate compaction	0.48+
10304	10305	Gully	Linear gully aligned N-S with moderate, concave sides and a concave base. Length: >3.00 m. Width: 0.55 m. Depth: 0.18 m.	0.27–0.73
10305	10304	Secondary fill	Dark brown grey silty clay	0.27–0.73

Trench No 104		Length 50 m	Width 2 m	Depth 0.56 m
Context Number	Fill Of/Filled With	Interpretative Category	Description	Depth BGL
10401		Topsoil	Mid grey brown clayey silt, rare 1-3% fine $\leq$ 5mm rooting from previous crop, moderate compaction, boundary below clear	0.0–0.45
10402		Natural	Light brown yellow silty sand, devoid of inclusions, moderate compaction	0.45+

Trench No 105		Length 50 m	Width 2 m	Depth 0.58 m
Context Number	Fill Of/Filled With	Interpretative Category	Description	Depth BGL
10501		Topsoil	Mid grey brown clayey silt, rare 1-3% fine rooting $\leq$ 5mm from previous crop, moderate compaction, boundary below diffuse	0.0–0.41
10502		Subsoil	Light brown grey silty clay, devoid of inclusions, moderate compaction, boundary below diffuse	0.41–0.49
10503		Natural	Light yellow white silty sand, devoid of inclusions, moderate compaction	0.49+

Trench No 106		Length 50 m	Width 2 m	Depth 0.58 m
Context Number	Fill Of/Filled With	Interpretative Category	Description	Depth BGL
10601		Topsoil	Mid grey brown clayey silt, rare 1-3% fine roots $\leq$ 5mm from previous crop, moderate compaction, boundary below clear	0.0–0.42
10602		Natural	Mid yellow red silty sand, devoid of inclusions, moderately soft compaction	0.42+

Trench No 107		Length 50 m	Width 2 m	Depth 0.54 m
Context Number	Fill Of/Filled With	Interpretative Category	Description	Depth BGL



10701		Topsoil	Mid grey brown clayey silt, rare 1-3% fine rooting ≤5mm from previous crop, moderate compaction, boundary below diffuse	0.0–0.38
10702		Subsoil	Light brown grey silty clay, devoid of inclusions, moderate compaction, boundary below diffuse	0.38–0.47
10703		Natural	Light yellow white silty sand, no inclusions, moderate compaction	0.47+

Trench No 108		Length 50 m	Width 2 m	Depth 1.20 m
Context Number	Fill Of/Filled With	Interpretative Category	Description	Depth BGL
10801		Topsoil	Mid grey brown clayey silt, rare 1-3% fine ≤5mm roots from previous crop, moderate compaction, boundary below clear	0.0–0.34
10802		Subsoil	Alluvium. mid brown grey silt clay, rare Mn flecks 1-4% fine ≤5mm subrounded poorly sorted, firm compaction, boundary below clear	0.34–1.13
10803		Natural	Mid yellow brown silty sand, devoid of inclusions, moderate compaction	1.13+

Trench No 109		Length 50 m	Width 2 m	Depth 0.82 m
Context Number	Fill Of/Filled With	Interpretative Category	Description	Depth BGL
10901		Topsoil	Mid grey brown clayey silt, rare 1-3% fine rooting ≤5mm from previous crop, moderate compaction, boundary below diffuse	0.0–0.34
10902		Subsoil	Light brown grey silty clay, devoid of inclusions, moderate compaction, boundary below diffuse	0.34–0.46
10903		Natural	Light brown yellow silty sand with lenses of dark brown grey clay, moderate compaction	0.46+

Trench No 110		Length 50 m	Width 2 m	Depth 0.48 m
Context Number	Fill Of/Filled With	Interpretative Category	Description	Depth BGL
11001		Topsoil	Mid grey brown clayey silt, rare 1-3% fine rooting ≤5mm from previous crop, moderate compaction, boundary below clear	0.0–0.38
11002		Natural	Light brown yellow silty sand mottled with dark grey brown silty clay, moderate compaction	0.38+



11003		Palaeochannel	Pale greyish brown, streaks of darker brown clay sand with virtually no inclusions	0.38–0.97
11004		Palaeochannel	Pale greyish brown, streaks of darker brown clay sand with virtually no inclusions	0.38–0.83
11005	11006, 11007, 11008	Ditch	Linear ditch aligned NW-SE with moderate, straight sides and a flat base. Length: >2.00 m. Width: 2.30 m. Depth: 0.71 m.	0.38–1.09
11006	11005	Secondary fill	Light bluish grey sandy clay with virtually no inclusions	0.38–1.09
11007	11005	Deliberate backfill	Black sandy clay with virtually no inclusions	0.38–0.9
11008	11005	Secondary fill	Dark grey, slight brownish mottling sandy clay with virtually no inclusions	0.38–0.85

Trench No 111		Length 50 m	Width 2 m	Depth 1.12 m
Context Number	Fill Of/Filled With	Interpretative Category	Description	Depth BGL
11101		Topsoil	Mid grey brown clayey silt, rare 1-3% fine ≤5mm rooting from previous crop, moderate compaction, boundary below somewhat diffuse	0.0–0.42
11102		Subsoil	Alluvium. dark brown grey silty clay, rare 1-5% Mn flecks fine ≤5mm subrounded poorly sorted, firm compaction, boundary below clear	0.42–0.82
11103		Natural	Mid yellow brown silty sand, devoid of inclusions, moderate compaction	0.82+

Trench No 112		Length 50 m	Width 2 m	Depth 0.75 m
Context Number	Fill Of/Filled With	Interpretative Category	Description	Depth BGL
11201		Topsoil	Mid grey brown clayey silt, rare 1-3% fine ≤5mm rooting from previous crop, moderately firm compaction, boundary below somewhat diffuse	0.0–0.32
11202		Subsoil	Alluvium. mid brown grey silty clay with rare 1-5% Mn flecks and FE panning both fine ≤5mm subrounded poorly sorted firm compaction boundary below clear, lower towards natural this layer starts laminating with fine lenses of silty sand possibly representing the rising water table and flooding of the fen	0.32–0.67



11203		Natural	Light brown yellow silty sand, rare 1-3% FE panning fine ≤5mm subrounded poorly sorted, soft compaction	0.67+
-------	--	---------	---	-------

Trench No 113		Length 50 m	Width 2 m	Depth 1.20 m
Context Number	Fill Of/Filled With	Interpretative Category	Description	Depth BGL
11301		Topsoil	Mid grey brown clayey silt, rare 1-3% fine ≤5mm rooting from previous crop, moderately firm compaction, boundary below somewhat diffuse	0.0–0.38
11302		Subsoil	Alluvium. mid brown grey silty clay with rare 1-5% Mn flecks and FE panning both fine ≤5mm subrounded poorly sorted firm compaction boundary below clear, lower towards natural this layer starts laminating with fine lenses of silty sand possibly representing the rising water table and flooding of the fen	0.38–0.96
11303		Natural	Light brown yellow silty sand, rare 1-3% FE panning fine ≤5mm subrounded poorly sorted, soft compaction	0.96+

Trench No 114		Length 50 m	Width 2 m	Depth 0.55 m
Context Number	Fill Of/Filled With	Interpretative Category	Description	Depth BGL
11401		Topsoil	Mid grey brown clayey silt, rare 1-3% fine ≤5mm rooting from previous crop, moderate compaction, boundary below somewhat diffuse	0.0–0.34
11402		Subsoil	Mid red brown clayey silt, moderate compaction	0.34–0.43
11403		Subsoil	Alluvium. mid brown grey silty clay with rare 1-5% Mn flecks and FE panning both fine ≤5mm subrounded poorly sorted firm compaction boundary below clear, lower towards natural this layer starts laminating with fine lenses of silty sand possibly representing the rising water table and flooding of the fen	0.43+



11404		Subsoil	Alluvium. mid brown grey silty clay with rare 1-5% Mn flecks and FE panning both fine $\leq 5\text{mm}$ subrounded poorly sorted firm compaction boundary below clear, lower towards natural this layer starts laminating with fine lenses of silty sand possibly representing the rising water table and flooding of the fen. in this trench the alluvium starts roughly halfway along the length to the south-west where the natural slopes down moderately. this is towards the other trenches which have featured a deep alluvium	0.5–0.95
-------	--	---------	---	----------

Trench No 115		Length 50 m	Width 2 m	Depth 0.66 m
Context Number	Fill Of/Filled With	Interpretative Category	Description	Depth BGL
11501		Topsoil	Mid grey brown clayey silt, rare 1-3% fine $\leq 5\text{mm}$ rooting from previous crop, moderately firm compaction, boundary below somewhat diffuse	0.0–0.34
11502		Subsoil	Alluvium. mid brown grey silty clay rare 1-5% Mn flecks and FE panning both fine $\leq 5\text{mm}$ subrounded poorly sorted, firm compaction	0.24+

Trench No 116		Length 50 m	Width 2 m	Depth 0.70 m
Context Number	Fill Of/Filled With	Interpretative Category	Description	Depth BGL
11601		Topsoil	Mid greyish brown silty clay. No inclusions present.	0.0–0.4
11602		Subsoil	Pale brown with a reddish hue silty clay with dark orange and grey blue mottling. No inclusions present.	0.4–0.5
11603		Natural	Dark yellow, orange and grey mottled silty sand with patches of dark brownish red with greyish blue mottled silty clay. No inclusions present. Compact.	0.5+

Trench No 117		Length 50 m	Width 2 m	Depth 0.70 m
Context Number	Fill Of/Filled With	Interpretative Category	Description	Depth BGL
11701		Topsoil	Mid greyish brown silty clay. No inclusions present.	0.0–0.36
11702		Subsoil	Pale brown with a reddish hue silty clay with dark orange and grey blue mottling. No inclusions present.	0.36–0.52



11703		Natural	Dark yellow, orange and grey mottled silty sand with patches of dark brownish red with greyish blue mottled silty clay. No inclusions present. Compact.	0.52+
11704	11705	Pit	Length: >4.00 m. Width: >2.00 m. Depth: >0.35 m.	0.25 – 0.55+
11705	11704	Deliberate backfill	Mid orange brown silty clay with occasional white beige lumps of lime	0.25 – 0.55 +

Trench No 118		Length 50 m	Width 2 m	Depth 0.60 m
Context Number	Fill Of/Filled With	Interpretative Category	Description	Depth BGL
11801		Topsoil	Mid greyish brown silty clay. No inclusions present.	0.0–0.35
11802		Subsoil	Dark orangey brown silty clay. Very compact. No inclusions present.	0.35–0.6
11803		Natural	Dark yellow, orange and grey mottled silty sand with patches of dark brownish red with greyish blue mottled silty clay. No inclusions present. Compact.	0.6+

Trench No 119		Length 50 m	Width 2 m	Depth 0.45 m
Context Number	Fill Of/Filled With	Interpretative Category	Description	Depth BGL
11901		Topsoil	Mid greyish brown silty clay. No inclusions present.	0.0–0.35
11902		Subsoil	Greyish brown orangey red and greyish blue mottled silty clay. Compact. No inclusions present.	0.35–0.4
11903		Natural	Dark yellow with a dark orangey hue and pale grey mottled silty sand. No inclusions present.	0.4+

Trench No 120		Length 50 m	Width 2 m	Depth 0.55 m
Context Number	Fill Of/Filled With	Interpretative Category	Description	Depth BGL
12001		Topsoil	Mid greyish brown silty clay. No inclusions present.	0.0–0.4
12002		Subsoil	Dark orangey brown silty clay. Very compact. No inclusions present.	0.4–0.5
12003		Natural	Dark yellow with a dark orangey hue and pale grey mottled silty sand. No inclusions present. Towards the middle of trench natural changes to a mid orangey red with patches of greyish blue silty clay before it changes back to previous natural on NE end of trench.	0.5+





Trench No 121		Length 50 m	Width 2 m	Depth 0.42 m
Context Number	Fill Of/Filled With	Interpretative Category	Description	Depth BGL
12101		Topsoil	Mid greyish brown sandy silt. No stone inclusions present.	0.35
12102		Natural	Pale brownish yellow with a reddish hue silty sand. No stone inclusions present. Plough scars visible.	0.35+
12103	12104, 12105, 12106	Ditch	Linear ditch aligned NE-SW with steep, concave sides and a flat base. Length: >1.04 m. Width: 1.64 m. Depth: 0.46 m.	0.35–0.81
12104	12103	Secondary fill	Mottled bluish grey and brownish orange sand sandy clay with ≥1% very small, sub-rounded, poorly sorted gravels	0.35–0.61
12105	12103	Deliberate backfill	Mid blackish brown silty clay loam	0.35–0.51
12106	12103	Secondary fill	Light brownish grey sandy clay with ≥1% very small, sub-rounded, poorly sorted gravels	0.35–0.62

Trench No 122		Length 50 m	Width 2 m	Depth 0.44 m
Context Number	Fill Of/Filled With	Interpretative Category	Description	Depth BGL
12201		Topsoil	Mid greyish brown sandy silt. No stone inclusions present.	0.0–0.38
12202		Natural	Pale brownish yellow with a reddish hue silty sand. No stone inclusions present. Plough scars visible.	0.38+
12203	12204	Gully	Linear gully aligned NE-SW with shallow, concave sides and a concave base. Length: >2.00 m. Width: 0.38 m. Depth: 0.08 m.	0.44–0.51
12204	12203	Secondary fill	Mid brown grey silty sand	0.44–0.51
12205	1207, 12206, 12208	Ditch	Linear ditch aligned NE-SW with moderate, concave sides and a flat base. Length: >10.00 m. Width: 1.90 m. Depth: 0.39 m.	0.4–0.8
12206	12205	Secondary fill	Light blue grey mottled with mid yellow brown silty clay	0.4–0.65
12207	12205	Deliberate backfill	Dark black grey silty clay	0.4–0.45
12208	12205	Secondary fill	Mid black grey silty clay	0.4–0.67

Trench No 123		Length 50 m	Width 2 m	Depth 0.38 m
Context Number	Fill Of/Filled With	Interpretative Category	Description	Depth BGL
12301		Topsoil	Mid greyish brown sandy silt. No stone inclusions present.	0.0–0.33



12302		Natural	Pale brownish yellow with a reddish hue silty sand. No stone inclusions present. Plough scars visible.	0.33+
12303	12304	Gully terminal	Linear gully terminal aligned N-S with steep, straight sides and a flat base. Length: 1.48 m. Width: 0.73 m. Depth: 0.26 m.	0.33–0.59
12304	12303	Secondary fill	Light greyish brown sand with ≤5% small sub-rounded inclusions scattered throughout	0.33–0.59
12305	12306, 12307, 12308	Ditch	Linear ditch aligned N-S with moderate, concave sides and a flat base. Length: >2.00 m. Width: 1.62 m. Depth: 0.45 m.	0.33–0.78
12306	12305	Secondary fill	Light greenish grey heavily mottled with light orangey brown silty sand with virtually no inclusions	0.33–0.78
12307	12305	Deliberate backfill	Black silty sand with heavily mixed through with flecks of charcoal	0.33–0.67
12308	12305	Secondary fill	Dark grey silty sand with virtually no inclusions	0.33–0.57

Trench No 124		Length 50 m	Width 2 m	Depth 0.42 m
Context Number	Fill Of/Filled With	Interpretative Category	Description	Depth BGL
12401		Topsoil	Mid greyish brown sandy silt. No stone inclusions present.	0.0–0.32
12402		Natural	Pale brownish yellow with a reddish hue silty sand. No stone inclusions present. Plough scars visible.	0.32+
12403	12404, 12405, 12406	Ditch	Linear ditch aligned E-W with moderate, straight sides and a flat base. Length: >2.00 m. Width: 1.68 m. Depth: 0.48 m.	0.32–0.79
12404	12403	Secondary fill	Light greenish grey, heavily mottled by orangey brown sandy clay with virtually no inclusions	0.32–0.79
12405	12403	Deliberate backfill	Black clay sand with virtually no inclusions	0.32–0.63
12406	12403	Secondary fill	Dark grey clay sand with virtually no inclusions	0.32–0.57
12407	12408, 12409, 12410, 12411	Ditch	Linear ditch aligned E-W with steep, straight sides and an unknown base. Length: >2.00 m. Width: 2.14 m. Depth: 0.79 m.	0.32–1.11+
12408	12407	Primary fill	Light orangey brown, streaks of grey sandy clay with virtually no inclusions	0.38–0.90
12409	12407	Secondary fill	Light grey with greenish hues, slight orangey brown mottling sandy clay with virtually no inclusions	0.32–1.11+
12410	12407	Deliberate backfill	Black sandy clay with virtually no inclusions	0.32–0.75



12411	12407	Secondary fill	Dark grey sandy clay with virtually no inclusions	0.32–0.67
12412	12413, 12414	Ditch	Linear ditch aligned E-W with moderate, concave sides and an u-shaped base. Length: >2.00 m. Width: 1.31 m. Depth: 0.44 m.	0.32–0.84
12413	12412	Primary fill	Mid brown, slightly greyish sandy clay with virtually no inclusions	0.53–0.84
12414	12412	Secondary fill	Light grey heavily mixed with orangey brown sandy clay with virtually no inclusions	0.32–0.83

Trench No 125		Length 50 m	Width 2 m	Depth 0.35 m
Context Number	Fill Of/Filled With	Interpretative Category	Description	Depth BGL
12501		Topsoil	Mid greyish brown sandy silt. No stone inclusions present.	0.0–0.32
12502		Natural	Pale brownish yellow with a reddish hue silty sand. No stone inclusions present. Plough scars visible.	0.32+
12503	12504, 12505, 12506, 12507, 12508, 12509	Ditch	Linear ditch aligned N-S and a flat base. Length: >2.00 m. Width: 2.52 m. Depth: 0.87 m.	0.32–1.19
12504	12503	Secondary fill	Light blue grey clayey sand with rare 1-2% FE panning fine 5-10mm subrounded moderately sorted	0.71–1.02
12505	12503	Secondary fill	Mid yellowish red with blue grey mottling silty sand	0.32–0.73
12506	12503	Primary fill	Mid yellowish red silty sand	0.32–0.44
12507	12503	Secondary fill	Mid blue grey clayey sand	0.32–0.66
12508	12503	Deliberate backfill	Dark blackish brown sandy silt	0.32–0.42
12509	12503	Secondary fill	Dark grey brown clayey silt	0.32–0.76
12510	12511, 12512, 12513	Ditch	Linear ditch aligned NE-SW with moderate, concave sides and a concave base. Length: >2.00 m. Width: 1.37 m. Depth: 0.62 m.	0.32–0.9
12511	12510	Secondary fill	Mid yellowish red silty sand	0.77–0.89
12512	12510	Secondary fill	Dark blackish brow clayey silt	0.71–0.77
12513	12510	Secondary fill	Dark brown grey clayey silt	0.32–0.72
12514	12515, 12516, 12517	Ditch	Linear ditch aligned NE-SW with irregular sides and a flat base. Length: >2.00 m. Width: 1.56 m. Depth: 0.50 m.	0.32–0.82
12515	12514	Secondary fill	Light blue grey clayey sand	0.63–0.82
12516	12514	Secondary fill	Mid grey blue clayey sand	0.5–0.63
12517	12514	Tertiary fill	Dark blackish brown sandy silt	0.32–0.5



Trench No 126		Length 50 m	Width 2 m	Depth 0.50 m
Context Number	Fill Of/Filled With	Interpretative Category	Description	Depth BGL
12601		Topsoil	Mid brown silty clay. No inclusions present.	0.0–0.35
12602		Natural	Dark brownish red with blueish grey and dark rusty orange mottling silty clay with patches of brownish yellow silty sand. No inclusions present.	0.5+
12603	12604	Ditch	Linear ditch aligned E-W with steep, straight sides and an irregular / undulating base. Length: >2.00 m. Width: 0.96 m. Depth: 0.72 m.	0.35–1.07
12604	12603	Secondary fill	Light grey mottled with orangey brown clay with virtually no inclusions	0.35–1.07
12605	12606	Ditch	Linear ditch aligned E-W with steep, straight sides and a flat base. Length: >2.00 m. Width: 1.82 m. Depth: 0.72 m.	0.35–0.87
12606	12605	Secondary fill	Mid greyish brown sandy clay with virtually no inclusions	0.35–0.87

Trench No 127		Length 50 m	Width 2 m	Depth 0.35 m
Context Number	Fill Of/Filled With	Interpretative Category	Description	Depth BGL
12701		Topsoil	Mid greyish brown sandy silt. No stone inclusions present.	0.0–0.32
12702		Natural	On west end natural consists of pale red clay sand with rusty red mottling and changes to a pale brownish yellow silty sand with a reddish hue.	0.32+
12703	12704, 12705	Ditch	Linear ditch aligned NW-SE with moderate, concave sides and a concave base. Length: >20.00 m. Width: >1.65 m. Depth: 0.44 m.	0.32–0.74
12704	12703	Secondary fill	Mod grey blue clayey sand	0.32–0.47
12705	12703	Secondary fill	Mid yellow brown sandy silt	0.47–0.74
12706	12707, 12708, 12709, 12710	Ditch	Linear ditch aligned N-S with steep, concave sides and a flat base. Length: >2.00 m. Width: 2.63 m. Depth: 0.62 m.	0.32–0.94
12707	12706	Secondary fill	Mid brownish red with dark orangey red mottling silty clay	0.81–0.94
12708	12706	Secondary fill	Dark greyish blue clay	0.76–0.81
12709	12706	Secondary fill	Greyish black silty clay	0.66–0.76
12710	12706	Secondary fill	Mid greyish brown with an orangey hue silty clay	0.32–0.66



12711	12712	Ditch terminal	Linear ditch terminal aligned E-W with moderate, concave sides and a flat base. Length: >25.00 m. Width: >1.60 m. Depth: 0.44 m.	0.32–0.44
12712	12711	Secondary fill	Brownish blue grey with small lenses of dark brownish orange mottling clay sand	0.32–0.44
12713	12714, 12715, 12716	Ditch	Linear ditch aligned NE-SW with steep, convex sides and a flat base. Length: >2.00 m. Width: 2.08 m. Depth: 0.74 m.	0.32–1.07
12714	12713	Secondary fill	Light bluish grey, heavily mottled with orangey brown streaks sandy clay with no stone inclusions but tubular nodules appearing to be mineralised roots are fairly common	0.32–1.07
12715	12713	Deliberate backfill	Black sandy clay with small charcoal flecks are quite common	0.32–0.65
12716	12713	Secondary fill	Dark grey sandy clay with virtually no inclusions	0.32–0.55

Trench No 128		Length 50 m	Width 2 m	Depth 0.44 m
Context Number	Fill Of/Filled With	Interpretative Category	Description	Depth BGL
12801		Topsoil	Mid brown silty clay. No inclusions present.	0.0–0.28
12802		Subsoil	Light greyish brown with orange mottling silty clay. Probably alluvium formation. No inclusions present.	0.28–0.44
12803		Natural	Dark brownish red with blueish grey and dark rusty orange mottling with patches of brownish yellow silty sand. No inclusions present.	0.44+
12804	12805, 12806, 12807	Ditch	Curvilinear ditch with moderate, concave sides and a flat base. Length: >5.00 m. Width: >2.00 m. Depth: 0.35 m.	0.44–0.79
12805	12804	Secondary fill	Greyish blue with a green hue clay	0.65–0.79
12806	12804	Secondary fill	Greyish black silty clay with charcoal flex present	0.6–0.66
12807	12804	Secondary fill	Mid greyish brown with and orangey hue silty clay	0.44–0.6
12808	12809, 12810, 12811	Ditch	Linear ditch aligned NW-SE with shallow, concave sides and a concave base. Length: >2.00 m. Width: 1.05 m. Depth: 0.17 m.	0.44–0.61
12809	12808	Secondary fill	Pale brown orange mottled silty clay	0.56–0.61
12810	12808	Secondary fill	Bright greyish blue clay	0.52–0.56
12811	12808	Secondary fill	Dark brown orange mottled silty clay	0.44–0.52



12812	12813, 12814, 12815	Ditch	Linear ditch aligned N-S with moderate, concave sides and a concave base. Length: >5.00 m. Width: 1.43 m. Depth: 0.39 m.	0.44–0.83
12813	12812	Secondary fill	Greyish brown with a reddish hue silty clay	0.44–0.62
12814	12812	Secondary fill	Mid greyish blue silty clay	0.62–0.71
12815	12812	Secondary fill	Greyish black with orangish yellow lenses silty clay with silty sand lenses with charcoal flakes	0.71–0.83

Trench No 129		Length 50 m	Width 2 m	Depth 0.50 m
Context Number	Fill Of/Filled With	Interpretative Category	Description	Depth BGL
12901		Topsoil	Mid brown silty clay. No inclusions present.	0.0–0.37
12902		Natural	Dark brownish red with blueish grey and dark rusty orange mottling silty clay with patches of brownish yellow silty sand. No inclusions present.	0.37+

Trench No 130		Length 50 m	Width 2 m	Depth 0.53 m
Context Number	Fill Of/Filled With	Interpretative Category	Description	Depth BGL
13001		Topsoil	Mid brown silty clay. No inclusions present.	0.0–0.36
13002		Natural	Dark brownish red with blueish grey and dark rusty orange mottling silty clay with patches of brownish yellow silty sand. On northern end of trench geology changes to just silty sand. No inclusions present.	0.36+
13003	13004, 13005, 13006	Ditch	Linear ditch aligned NW-SE with steep, straight sides and a flat base. Length: >2.00 m. Width: 1.68 m. Depth: 0.63 m.	0.36–1
13004	13003	Secondary fill	Light greenish grey mottled with orangey brown sandy clay with virtually no inclusions	0.36–1
13005	13003	Secondary fill	Black sandy clay with virtually no inclusions	0.36–0.7
13006	13003	Secondary fill	Dark grey sandy clay with virtually no inclusions	0.36–0.66

Trench No 131		Length 50 m	Width 2 m	Depth 0.48 m
Context Number	Fill Of/Filled With	Interpretative Category	Description	Depth BGL
13101		Topsoil	Mid brown silty clay. No inclusions present.	0.0–0.26





13102		Subsoil	Light greyish brown with orange mottling silty clay. Probably alluvium formation. No inclusions present.	0.26–0.4
13103		Natural	Dark brownish red with blueish grey and dark rusty orange mottling silty clay with patches of brownish yellow silty sand. No inclusions present.	0.4+

Trench No 132		Length 50 m	Width 2 m	Depth 0.50 m
Context Number	Fill Of/Filled With	Interpretative Category	Description	Depth BGL
13201		Topsoil	Mid brown silty clay. No inclusions present.	0.0–0.34
13202		Natural	Dark brownish red with blueish grey and dark rusty orange mottling silty clay with patches of brownish yellow silty sand. No inclusions present.	0.34+

Trench No 133		Length 50 m	Width 2 m	Depth 0.42 m
Context Number	Fill Of/Filled With	Interpretative Category	Description	Depth BGL
13301		Topsoil	Mid brown silty clay. No inclusions present.	0.0–0.3
13302		Natural	Dark brownish red with blueish grey and dark rusty orange mottling silty clay. No inclusions present.	0.3+

Trench No 134		Length 50 m	Width 2 m	Depth 0.45 m
Context Number	Fill Of/Filled With	Interpretative Category	Description	Depth BGL
13401		Topsoil	Mid brown silty clay. No inclusions present.	0.0–0.32
13402		Natural	Dark brownish red with blueish grey and dark rusty orange mottling silty clay with large patches of brownish yellow silty sand. No inclusions present.	0.32+

Trench No 135		Length 50 m	Width 2 m	Depth 0.50 m
Context Number	Fill Of/Filled With	Interpretative Category	Description	Depth BGL
13501		Topsoil	Mid brown silty clay. No inclusions present.	0.0–0.35
13502		Natural	Dark brownish red with blueish grey and dark rusty orange mottling silty clay with patches of brownish yellow silty sand. No inclusions present.	0.35+



13503	13504, 13505	Ditch	Linear ditch aligned E-W with moderate, concave sides and a flat base. Length: >2.00 m. Width: 1.77 m. Depth: 0.98 m.	0.35–0.92
13504	13503	Primary fill	Light reddish grey with orange inclusions silty sand	0.82–0.92
13505	13503	Secondary fill	Mid yellowish grey with orange inclusions silty clay	0.35–0.82

Trench No 136		Length 50 m	Width 2 m	Depth 0.42 m
Context Number	Fill Of/Filled With	Interpretative Category	Description	Depth BGL
13601		Topsoil	Mid brown silty clay. No inclusions present.	0.0–0.32
13602		Natural	Dark brownish red with blueish grey and dark rusty orange mottling silty clay with patches of brownish yellow silty sand. Towards N end of trench geology changes to silty sand only. No inclusions present.	0.32+
13603		Natural	Pale bluish grey silty clay, no inclusions, band of geology running through the trench	0.32+

Trench No 137		Length 50 m	Width 2 m	Depth 0.52 m
Context Number	Fill Of/Filled With	Interpretative Category	Description	Depth BGL
13701		Topsoil	Mid brown silty clay. No inclusions present.	0.0–0.36
13702		Natural	Dark brownish red with blueish grey and dark rusty orange mottling silty clay. No inclusions present.	0.36+
13703	13704, 13705	Ditch	Linear ditch aligned NW-SE with moderate, concave sides and a flat base. Length: >4.00 m. Width: 1.65 m. Depth: 0.38 m.	0.36–0.74
13704	13703	Secondary fill	Dark blackish brown clayey silt	0.64–0.74
13705	13703	Secondary fill	Mid bluish brown grey, heavy FE rusty coloured mottling, slightly silty clay	0.35–0.65

Trench No 138		Length 50 m	Width 2 m	Depth 0.48 m
Context Number	Fill Of/Filled With	Interpretative Category	Description	Depth BGL
13801		Topsoil	Mid brown silty clay. No inclusions present.	0.0–0.36
13802		Natural	Dark brownish red with blueish grey and dark rusty orange mottling silty clay with large patches of brownish yellow silty sand. No inclusions present.	0.36+



13803	13804, 13805	Ditch	Linear ditch aligned E-W with moderate, concave sides and a flat base. Length: >2.00 m. Width: >1.40 m. Depth: 0.38 m.	0.36–0.74
13804	13803	Secondary fill	Mid greyish brown with orange inclusions silty clay	0.62–0.74
13805	13803	Secondary fill	Mid yellowish grey silty clay	0.36–0.62

Trench No 139		Length 50 m	Width 2 m	Depth 0.48 m
Context Number	Fill Of/Filled With	Interpretative Category	Description	Depth BGL
13901		Topsoil	Mid brown silty clay. No inclusions present.	0.0–0.3
13902		Natural	Dark brownish red with blueish grey and dark rusty orange mottling silty clay with patches of brownish yellow silty sand. No inclusions present.	0.3+
13903	13904, 13905	Ditch	Linear ditch aligned E-W with moderate, concave sides and a flat base. Length: >2.00 m. Width: >1.60 m. Depth: 0.61 m.	0.3–0.91
13904	13903	Secondary fill	Mid yellowish grey with orange inclusions silty clay with rare rounded and sub-rounded stones	0.49–0.91
13905	13903	Secondary fill	Mid greyish brown silty clay	0.3–0.49

Trench No 140		Length 50 m	Width 2 m	Depth 0.45 m
Context Number	Fill Of/Filled With	Interpretative Category	Description	Depth BGL
14001		Topsoil	Mid brown silty clay. No inclusions present.	0.0–0.35
14002		Natural	Dark brownish red with blueish grey dark rusty orange mottling silty clay. No inclusions present.	0.35+

Trench No 141		Length 50 m	Width 2 m	Depth 0.43 m
Context Number	Fill Of/Filled With	Interpretative Category	Description	Depth BGL
14101		Topsoil	Mid brown silty clay. No inclusions present.	0.0–0.3
14102		Natural	Dark brownish red with blueish grey and dark rusty orange mottling silty clay and patches of bright bluish clay. No inclusions present.	0.3+
14103	14104, 14105	Ditch	Linear ditch aligned NE-SW with steep, straight sides and a flat base. Length: >2.00 m. Width: >1.37 m. Depth: 0.72 m.	0.3–1.02
14104	14103	Secondary fill	Mid greyish brown with orange inclusions silty clay with very rare, small stone inclusions	0.81–1.02



14105	14103	Secondary fill	Dark greyish brown silty clay with very rare, small, rounded stones	0.3–0.81
-------	-------	----------------	---	----------

Trench No 142		Length 50 m	Width 2 m	Depth 0.38 m
Context Number	Fill Of/Filled With	Interpretative Category	Description	Depth BGL
14201		Topsoil	Mid brown silty clay. No inclusions present.	0.0–0.26
14202		Natural	Dark brownish red with blueish grey and dark rusty orange mottling silty clay and patches of bright bluish clay. No inclusions present.	0.26+

Trench No 143		Length 50 m	Width 2 m	Depth 0.42 m
Context Number	Fill Of/Filled With	Interpretative Category	Description	Depth BGL
14301		Topsoil	Mid brown silty clay. No inclusions present.	0.0–0.32
14302		Natural	Dark brownish red with blueish grey and dark rusty orange mottling silty clay and patches of bright bluish clay. A band of brownish yellow grey mottled silty sand present on SW end of trench. No inclusions present.	0.32+

Trench No 144		Length 50 m	Width 2 m	Depth 0.47 m
Context Number	Fill Of/Filled With	Interpretative Category	Description	Depth BGL
14401		Topsoil	Mid brown silty clay. No inclusions present.	0.0–0.34
14402		Natural	Dark brownish red with blueish grey and dark rusty orange mottling silty clay and patches of bright bluish clay. A band of brownish yellow grey mottled silty sand present in middle of trench. No inclusions present.	0.34+

Trench No 145		Length 50 m	Width 2 m	Depth 0.38 m
Context Number	Fill Of/Filled With	Interpretative Category	Description	Depth BGL
14501		Topsoil	Mid brown silty clay. No inclusions present.	0.0–0.3
14502		Natural	Dark brownish red with blueish grey and dark rusty orange mottling silty clay and patches of bright bluish clay. A band of brownish yellow grey mottled silty sand present on SE end of trench. No inclusions present.	0.3+



Trench No 146		Length 50 m	Width 2 m	Depth 0.34 m
Context Number	Fill Of/Filled With	Interpretative Category	Description	Depth BGL
14601		Topsoil	Mid brown silty clay. No inclusions present.	0.0–0.28
14602		Natural	Dark brownish red with blueish grey and dark rusty orange mottling silty clay with patches of bright bluish clay. Towards N end of trench change to brownish yellow grey mottled silty sand. No inclusions present.	0.28+

Trench No 147		Length 50 m	Width 2 m	Depth 0.32 m
Context Number	Fill Of/Filled With	Interpretative Category	Description	Depth BGL
14701		Topsoil	Mid brown silty clay. No inclusions present.	0.0–0.3
14702		Natural	Bands of dark brownish red with blueish grey and dark rusty orange mottling silty clay with patches of bright bluish clay and bands of brownish yellow grey mottled silty sand. No inclusions present.	0.3+

Trench No 148		Length 50 m	Width 2 m	Depth 0.40 m
Context Number	Fill Of/Filled With	Interpretative Category	Description	Depth BGL
14801		Topsoil	Mid brown silty clay. No inclusions present.	0.0–0.3
14802		Natural	Dark brownish red with blueish grey and dark rusty orange mottling silty clay and patches of bright bluish clay. View larger patches of pale brownish yellow silty sand present, as well. No inclusions present.	0.3+

Trench No 149		Length 50 m	Width 2 m	Depth 0.34 m
Context Number	Fill Of/Filled With	Interpretative Category	Description	Depth BGL
14901		Topsoil	Mid brown silty clay. No inclusions present.	0.0–0.32
14902		Natural	Dark brownish red with blueish grey and dark rusty orange mottling silty clay and patches of bright bluish clay. Towards SW patches of pale brownish yellow silty sand present. No inclusions present.	0.32+



Trench No 150		Length 50 m	Width 2 m	Depth 0.45 m
Context Number	Fill Of/Filled With	Interpretative Category	Description	Depth BGL
15001		Topsoil	Mid brown silty clay. No inclusions present.	0.0–0.34
15002		Natural	Patches of dark brownish red with blueish grey and dark rusty orange mottling silty clay with patches of bright bluish clay and patches of brownish yellow grey mottled silty sand. No inclusions present.	0.34+

Trench No 151		Length 50 m	Width 2 m	Depth 0.31 m
Context Number	Fill Of/Filled With	Interpretative Category	Description	Depth BGL
15101		Topsoil	Mid brown silty clay. No inclusions present.	0.0–0.29
15102		Natural	Dark brownish red with blueish grey and dark rusty orange mottling silty clay and patches of bright bluish clay and brownish yellow silty sand. No inclusions present.	0.29+

Trench No 152		Length 50 m	Width 2 m	Depth 0.43 m
Context Number	Fill Of/Filled With	Interpretative Category	Description	Depth BGL
15201		Topsoil	Mid brown silty clay. No inclusions present.	0.0–0.3
15202		Natural	Dark brownish red with blueish grey and dark rusty orange mottling silty clay and patches of bright bluish clay and pale brownish yellow silty sand. No inclusions present.	0.3+
15203	15204, 15205	Ditch	Linear ditch aligned NE-SW with steep, straight sides and a flat base. Length: >2.00 m. Width: >1.43 m. Depth: 0.77 m.	0.33–1.07
15204	15203	Secondary fill	Mid brownish grey with orange inclusions silty clay with very rare, small, rounded stones	0.79–1.07
15205	15203	Secondary fill	Mid yellowish grey silty clay with rare, small, rounded stones	0.33–0.82

Trench No 153		Length 50 m	Width 2 m	Depth 0.42 m
Context Number	Fill Of/Filled With	Interpretative Category	Description	Depth BGL
15301		Topsoil	Mid brown silty clay. No inclusions present.	0.0–0.35





15302		Natural	Dark brownish red with blueish grey and dark rusty orange mottling silty clay and patches of bright bluish clay and brownish yellow silty sand. No inclusions present.	0.35+
-------	--	---------	--	-------

Trench No 241		Length 25 m	Width 2 m	Depth 0.60 m
Context Number	Fill Of/Filled With	Interpretative Category	Description	Depth BGL
24101		Topsoil	Mid greyish brown silty clay. No inclusions present.	0.0–0.2
24102		Natural	Dark brownish red with blueish grey and dark rusty orange mottling silty clay. No inclusions present.	0.0–0.6

Trench No 242		Length 25 m	Width 2 m	Depth 0.57 m
Context Number	Fill Of/Filled With	Interpretative Category	Description	Depth BGL
24201		Topsoil	Mid greyish brown silty clay. No inclusions present.	0.0–0.36
24202		Natural	Dark brownish red with blueish grey and dark rusty orange mottling silty clay. No inclusions present.	0.36+
24203	24204, 24205	Ditch	Linear ditch aligned NE to SW with shallow, concave sides and a concave base. Length: >100.00 m. Width: 1.90 m. Depth: 0.40 m.	0.38–0.98
24204	24203	Secondary fill	Pale, blueish grey, rusty iron panning mottles throughout slightly silty clay	0.78–0.98
24205	24203	Secondary fill	Dark brown with darker brown to black base, slightly silty clay	0.38–0.78
24206	24207	Land drain	Linear land drain aligned NE-SW with vertical, straight sides and an unknown base. Length: >2.00 m. Width: 0.12 m. Depth: >0.60 m.	0.36–0.98+
24207	24206	Deliberate backfill	Mixed, mid to dark brown and grey mottled iron panned patches slightly silty clay	0.38–0.98+

Trench No 243		Length 25 m	Width 2 m	Depth 0.50 m
Context Number	Fill Of/Filled With	Interpretative Category	Description	Depth BGL
24301		Topsoil	Mid greyish brown silty clay. No inclusions present.	0.0–0.35
24302		Natural	Dark yellow, orange and grey mottled silty sand. Compact. No inclusions present.	0.35+



24303	24304, 24305, 24306	Uncategorised feature	Linear uncategorised feature aligned NW-SE with shallow, concave sides and a flat base. Length: >2.00 m. Width: 3.70 m. Depth: 0.34 m.	0.35–0.69
24304	24303	Secondary fill	Mid bluish grey silty clay	0.55–0.69
24305	24303	Secondary fill	Dark greyish black silty clay	0.45–0.55
24306	24303	Secondary fill	Mid brownish grey silty clay	0.35–0.45

Trench No 244		Length 25 m	Width 2 m	Depth 0.44 m
Context Number	Fill Of/Filled With	Interpretative Category	Description	Depth BGL
24401		Topsoil	Mid greyish brown silty clay. No inclusions present.	0.0–0.3
24402		Natural	Dark yellow, orange and grey mottled silty sand. Compact. No inclusions present.	0.3+
24403	24404, 24405	Ditch	Linear ditch aligned NE-SW with shallow, concave sides and a flat base. Length: >2.00 m. Width: 3.65 m. Depth: 0.33 m.	0.3–0.63
24404	24403	Secondary fill	Light blue grey silty clay with rare 2-5% FE panning, very fine ≤5mm subrounded poorly sorted	0.46–0.63
24405	24403	Secondary fill	Dark blackish brown silty clay	0.3–0.46

Trench No 245		Length 25 m	Width 2 m	Depth 0.48 m
Context Number	Fill Of/Filled With	Interpretative Category	Description	Depth BGL
24501		Topsoil	Mid greyish brown silty clay. No inclusions present.	0.0–0.38
24502		Natural	Dark yellow, orange and grey mottled silty sand. Compact. No inclusions present.	0.38+
24503	24504, 24505, 24506	Ditch	Linear ditch aligned E-W with shallow, straight sides and a concave base. Length: >2.00 m. Width: >5.26 m. Depth: 0.93 m.	0.38–0.86
24504	24503	Secondary fill	Dark greenish grey sandy clay with virtually no inclusions	0.38–0.86
24505	24503	Secondary fill	Black, some dark brown mottling sandy clay with virtually no inclusions	0.38–0.62
24506	24503	Secondary fill	Dark brownish grey heavily mottled with orangey brown sandy clay with virtually no inclusions	0.38–0.62

Trench No 246		Length 25 m	Width 2 m	Depth 0.54 m
Context Number	Fill Of/Filled With	Interpretative Category	Description	Depth BGL
24601		Topsoil	Mid greyish brown silty clay. No inclusions present.	0.0–0.42



24602		Natural	Dark yellow, orange and grey mottled silty sand. Compact. No inclusions present.	0.42+
-------	--	---------	--	-------

Trench No 247		Length 25 m	Width 2 m	Depth 0.50 m
Context Number	Fill Of/Filled With	Interpretative Category	Description	Depth BGL
24701		Topsoil	Mid greyish brown silty clay. No inclusions present.	0.0–0.3
24702		Natural	Dark yellow, orange and grey mottled silty sand. Compact. No inclusions present.	0.3+

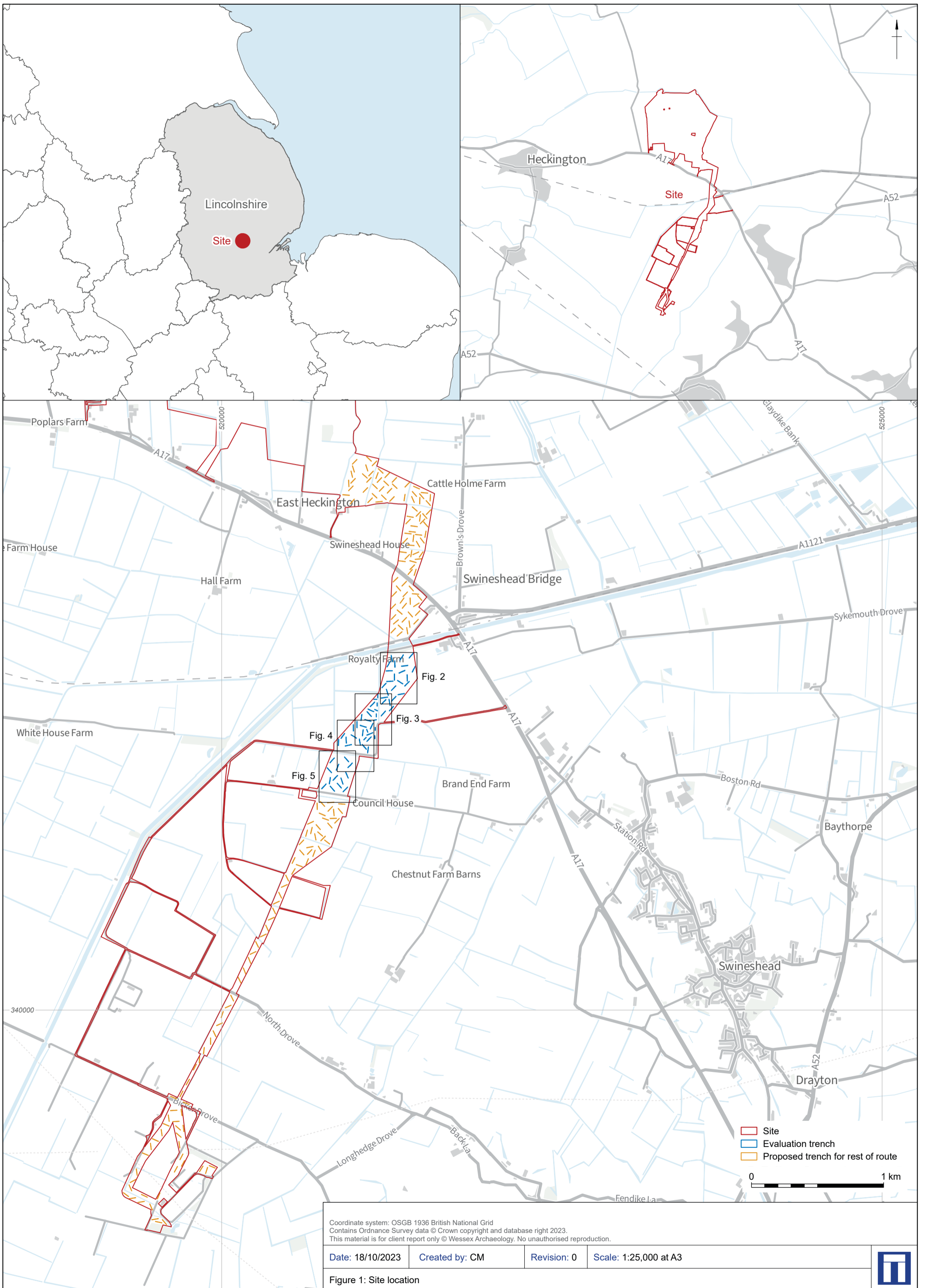
Trench No 248		Length 25 m	Width 2 m	Depth 0.46 m
Context Number	Fill Of/Filled With	Interpretative Category	Description	Depth BGL
24801		Topsoil	Mid greyish brown silty clay. No inclusions present.	0.0–0.3
24802		Natural	Dark brownish red with blueish grey and dark rusty orange mottling silty clay and patches of dark yellow, dark orange and grey mottled silty sand. No inclusions present.	0.3+
24803	24804	Ditch	Linear ditch aligned NW-SE with shallow, concave sides and a concave base. Length: >2.30 m. Width: 1.10 m. Depth: 0.10 m.	0.3–0.59
24804	24803	Secondary fill	Mid brown grey silty clay with rare 3-5% iron panning, very fine ≤5mm subrounded poorly sorted	0.3–0.59
24805	24806	Ditch	Linear ditch aligned NW-SE with steep, straight sides and a flat base. Length: >3.00 m. Width: 1.70 m. Depth: 0.18 m.	0.3–0.48
24806	25805	Secondary fill	Mid yellow brown silty clay	0.3–0.48

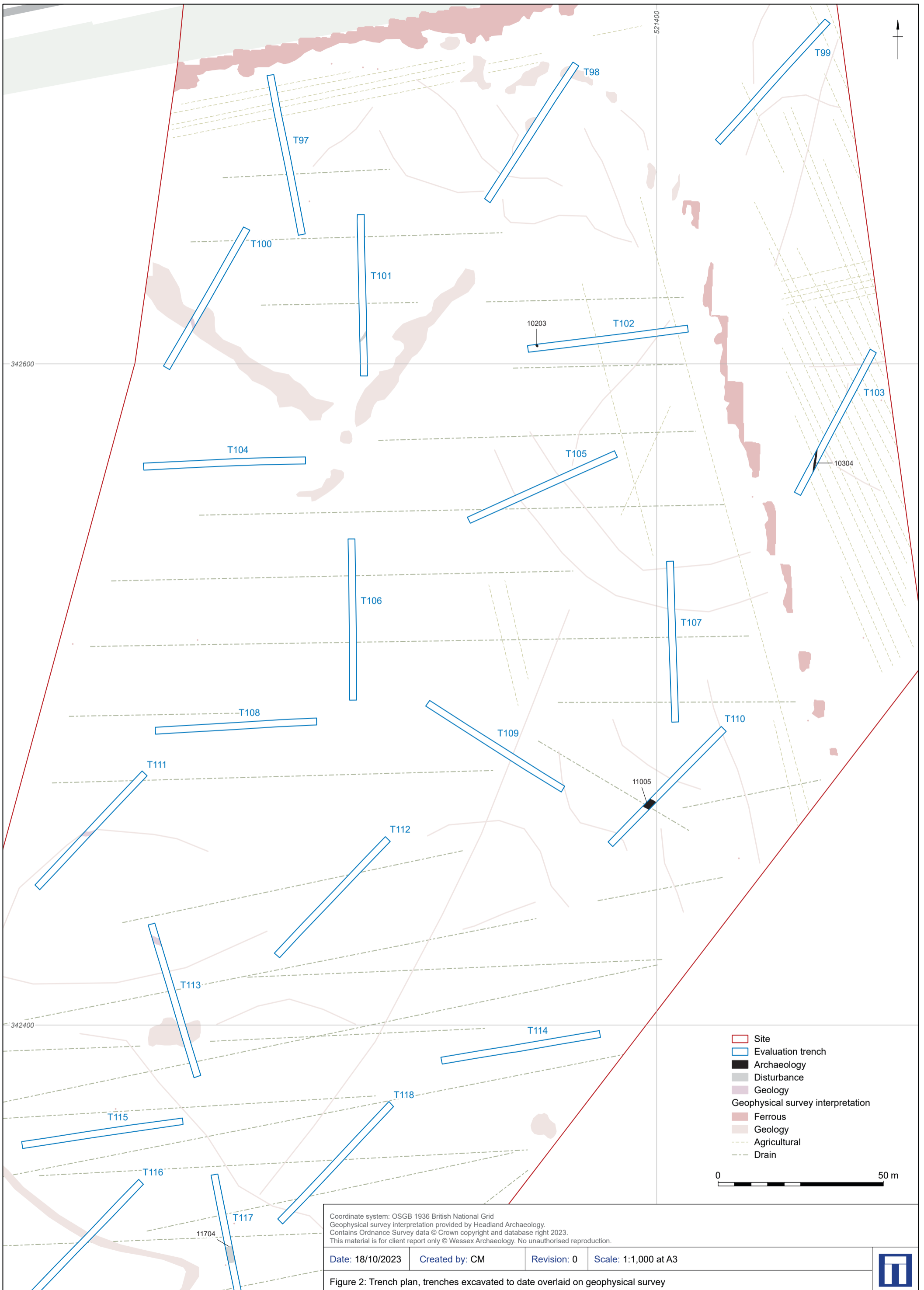
Trench No 249		Length 25 m	Width 2 m	Depth 0.45 m
Context Number	Fill Of/Filled With	Interpretative Category	Description	Depth BGL
24901		Topsoil	Mid greyish brown silty clay. No inclusions present.	0.0–0.3
24902		Natural	Dark brownish red with blueish grey and dark rusty orange mottling silty clay and patches of bright bluish clay. No inclusions present.	0.3+

Trench No 250		Length 25 m	Width 2 m	Depth 0.50 m
Context Number	Fill Of/Filled With	Interpretative Category	Description	Depth BGL
25001		Topsoil	Mid greyish brown silty clay. No inclusions present.	0.0–0.3



25002		Natural	Dark brownish red with blueish grey and dark rusty orange mottling silty clay. In the middle of the trench a wide band of dark yellow, dark orange and grey mottled silty sand present. No inclusions present.	0.3+
-------	--	---------	--	------





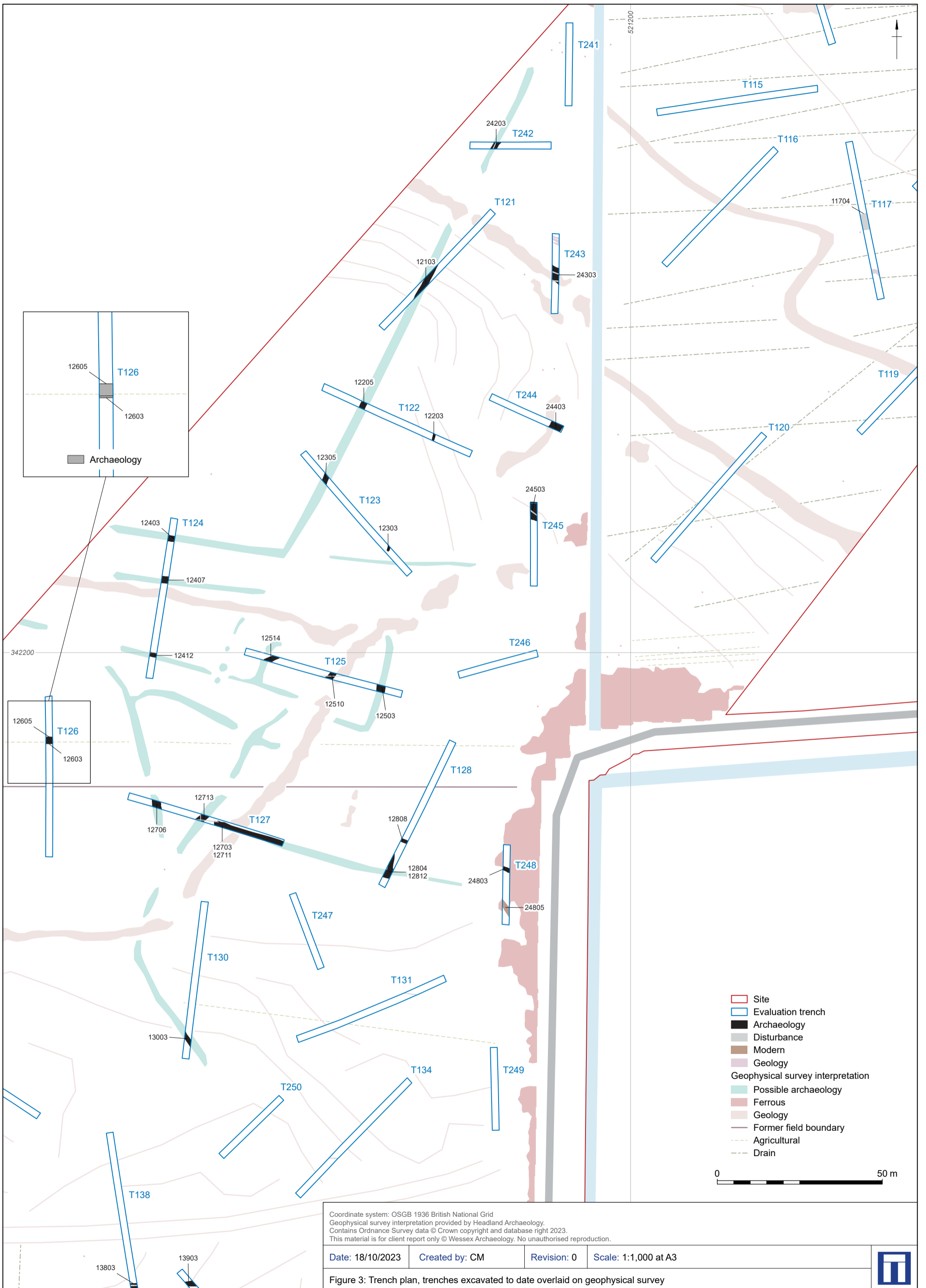
Coordinate system: OSGB 1936 British National Grid  
 Geophysical survey interpretation provided by Headland Archaeology.  
 Contains Ordnance Survey data © Crown copyright and database right 2023.  
 This material is for client report only © Wessex Archaeology. No unauthorised reproduction.

Date: 18/10/2023    Created by: CM    Revision: 0    Scale: 1:1,000 at A3

Figure 2: Trench plan, trenches excavated to date overlaid on geophysical survey





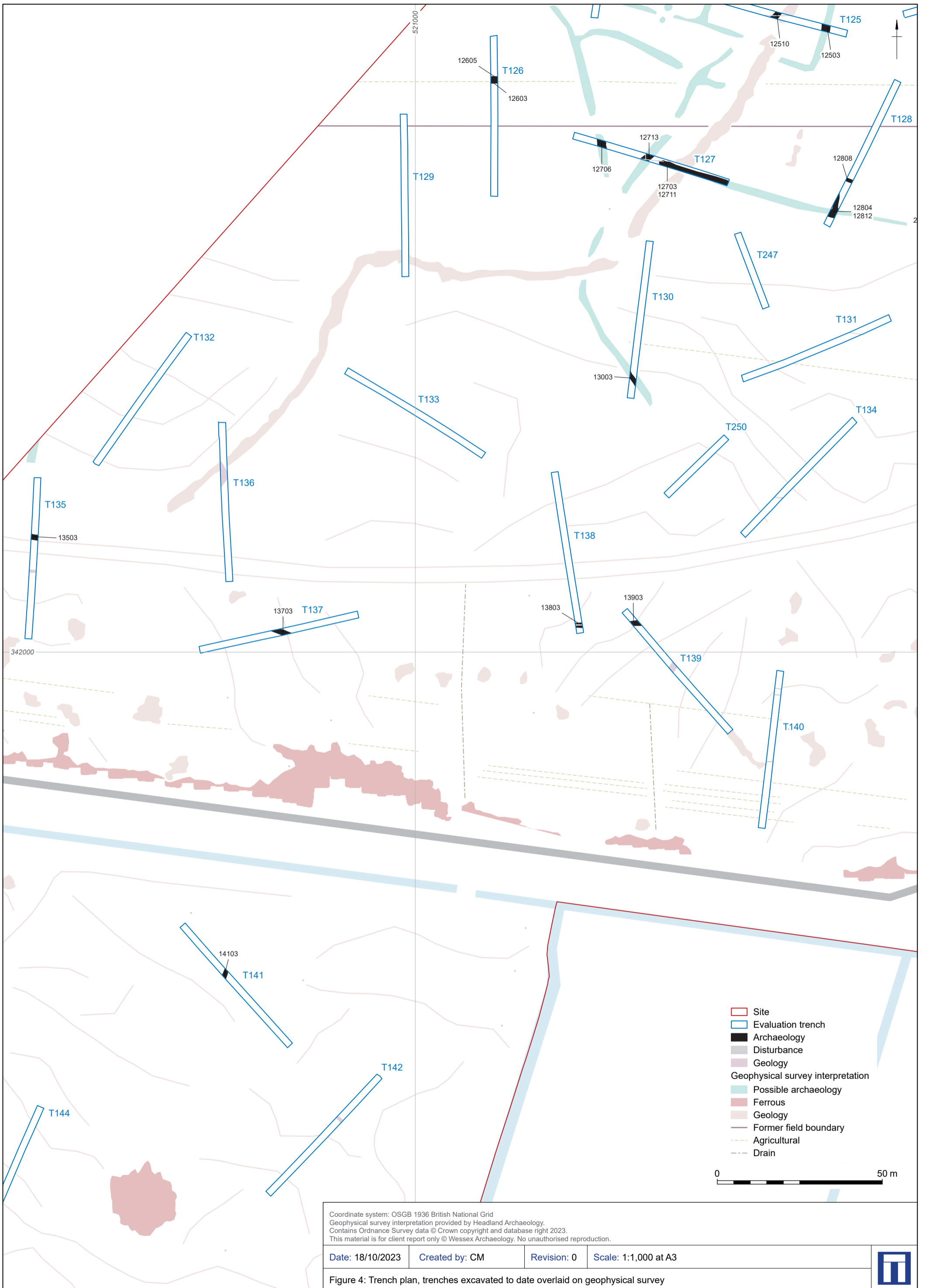


Coordinate system: OSGB 1936 British National Grid  
 Geophysical survey interpretation provided by Headland Archaeology.  
 Contains Ordnance Survey data © Crown copyright and database right 2023.  
 This material is for client report only © Wessex Archaeology. No unauthorised reproduction.

Date: 18/10/2023    Created by: CM    Revision: 0    Scale: 1:1,000 at A3

Figure 3: Trench plan, trenches excavated to date overlaid on geophysical survey

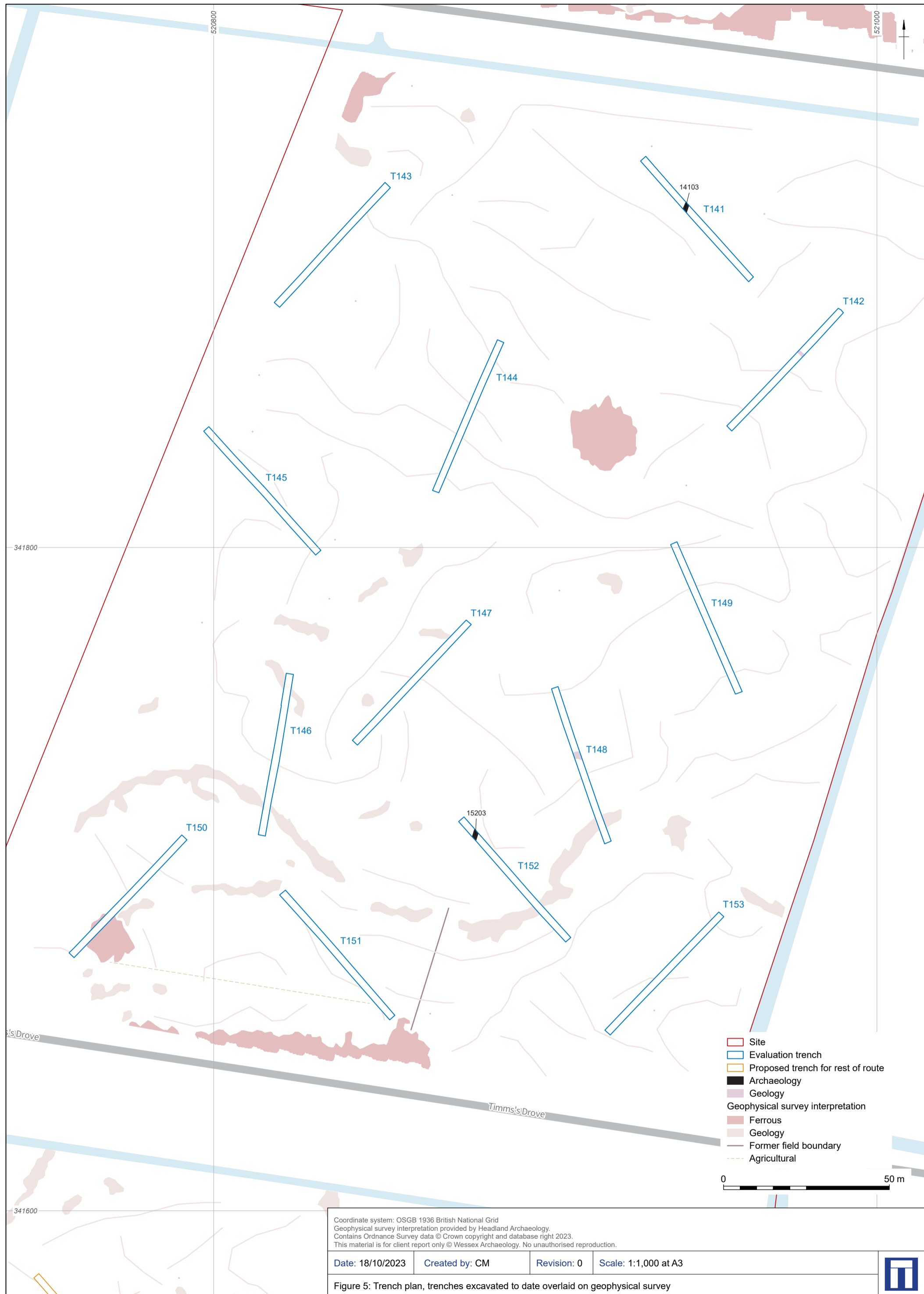




Coordinate system: OSGB 1936 British National Grid  
 Geophysical survey interpretation provided by Headland Archaeology.  
 Contains Ordnance Survey data © Crown copyright and database right 2023.  
 This material is for client report only © Wessex Archaeology. No unauthorised reproduction.

Date: 18/10/2023	Created by: CM	Revision: 0	Scale: 1:1,000 at A3
------------------	----------------	-------------	----------------------

Figure 4: Trench plan, trenches excavated to date overlaid on geophysical survey



Coordinate system: OSGB 1936 British National Grid  
 Geophysical survey interpretation provided by Headland Archaeology.  
 Contains Ordnance Survey data © Crown copyright and database right 2023.  
 This material is for client report only © Wessex Archaeology. No unauthorised reproduction.

Date: 18/10/2023    Created by: CM    Revision: 0    Scale: 1:1,000 at A3

Figure 5: Trench plan, trenches excavated to date overlaid on geophysical survey







Figure 6: Ditch 12514 viewed from the north-east, 1 m scale



Figure 7: North facing section of ditch 12706, 1 m scale

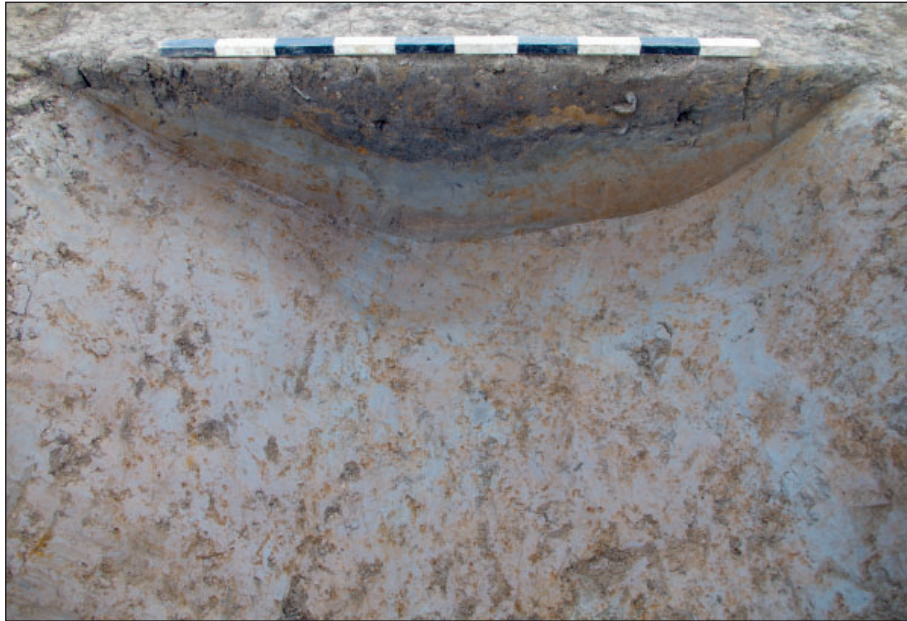


Figure 8: North facing section of ditch 12812, 1 m scale



Figure 9: Gully 10304 viewed from the south, 0.2 m scale





Figure 10: East facing section of ditch 12407, showing cut for land drain on southern edge, 1 m scale

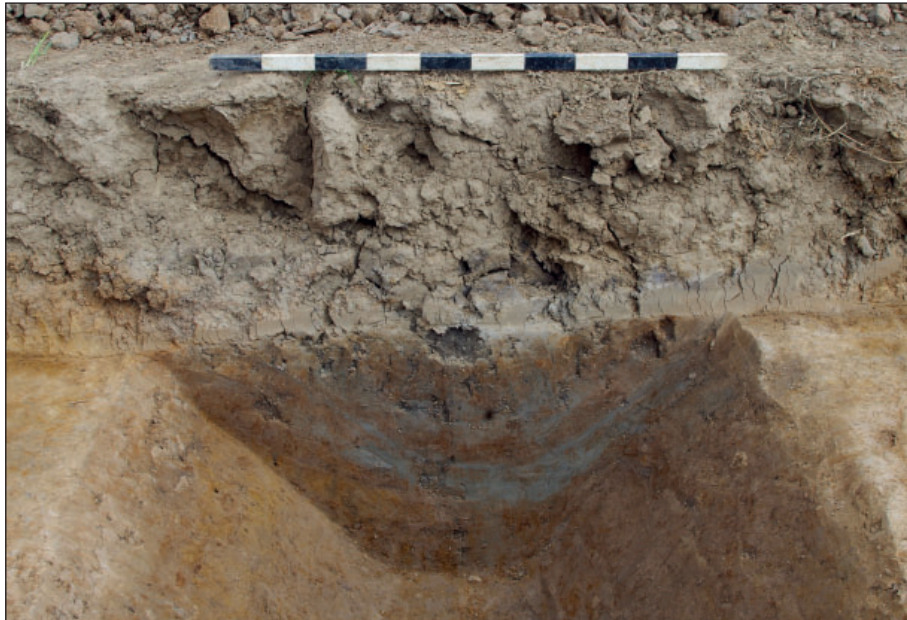


Figure 11: West facing section of ditch 12412, 1 m scale





Figure 12: South-east facing section of ditch 13003, 1 m scale



Wessex Archaeology Ltd registered office Portway House, Old Sarum Park, Salisbury, Wiltshire SP4 6EB  
Tel: 01722 326867 Fax: 01722 337562 info@wessexarch.co.uk www.wessexarch.co.uk



FS 606559